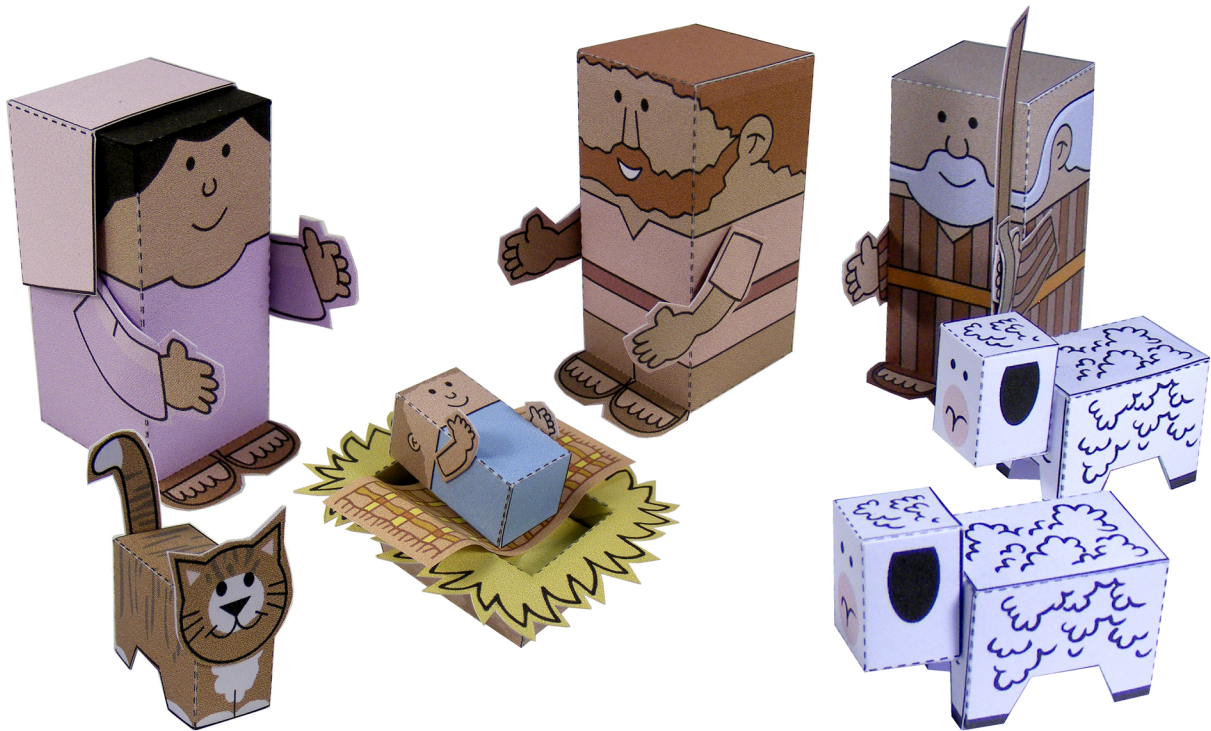


**FREE SAMPLE**



# Paper Nativity



*Merry  
Christmas*

Bible MiniWorld

**EASY TO  
BUILD PAPER  
CRAFT**

# General Assembly Instructions

## TOOLS NEEDED



- Sharp scissors.
- Paper-cutting knife (recommended: X-Acto knife with a #11 blade).
- Sturdy tweezers with smooth edges. (Tweezers with rough edges or teeth will mar the surface of the pieces.)
- Metal ruler to make a straight cut or score.
- Toothpicks for reaching into tiny corners and spreading drops of glue.
- White glue and glue stick.
- Cutting surface (recommended: a cutting mat).
- Dry pen (no ink) or blunt knife for scoring.

- Print pages 5 to 7 on White Card Stock paper (sometimes called Cover Paper or Bristol), 160 grammes (recommended) or 190-200 grammes (110 lbs) preferably non glossy but with a mat finish

## Cutting

Usually, a piece for a card stock model is cut out in two stages.

First, the piece is separated from the rest of the pieces by cutting roughly around it with scissors. Don't cut along the lines at this step.

Once the piece is separated, you can work on it without damaging other pieces. It's best to do the scoring and folding before proceeding to the fine cutting.

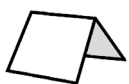
### Work on one piece at a time:

- Score along the dotted lines.
- Cut along the solid lines.
- Fold along the dotted lines, but don't add glue to any pieces yet.

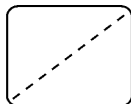
**VERY IMPORTANT:** Try out the pieces to be glued before applying the glue. This will help you understand how the pieces fit together, and you will be able to take note of any adjustments that might be needed. Then apply a small amount of glue on the tab indicated by a black dot.

## Scoring

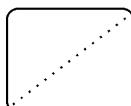
There are two kinds of folds:



**Mountain fold**



**Valley fold**



**Mountain fold** generally means that the texture is on the outside, while on a **valley fold** the texture is usually inside.

Score the fold lines to make a crisp straight fold. It's especially important for the smallest pieces to be scored before folding. To score, place a metal ruler along the fold line, and then press with a dull point (a dry pen or dull knife) along the fold line to compress the paper. This will help to achieve a crisp fold.

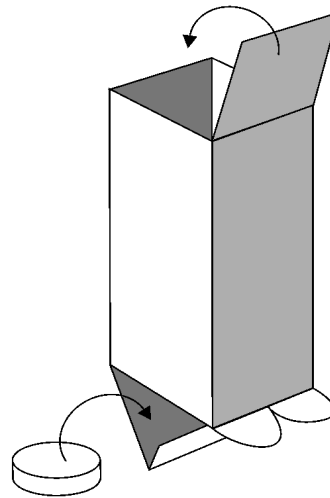
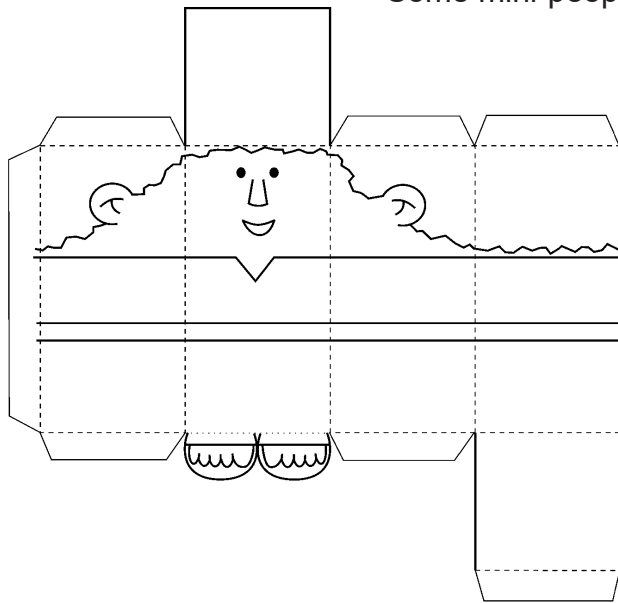
Most pieces on the model require a **mountain fold**, though a few use a **valley fold**. Valley folds will be indicated on the model pieces with the valley fold symbol.

[www.mylittlehouse.org](http://www.mylittlehouse.org)

Copyright © 2016 by Didier Martin. All rights reserved. No parts of this product may be reproduced in any form, by any electronic or mechanical means without permission in writing from the author.

# Assembling the Mini-people

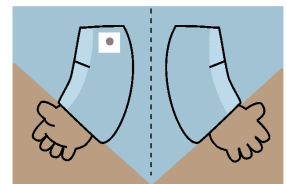
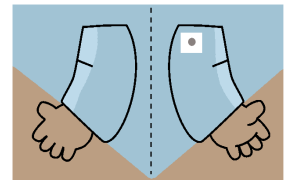
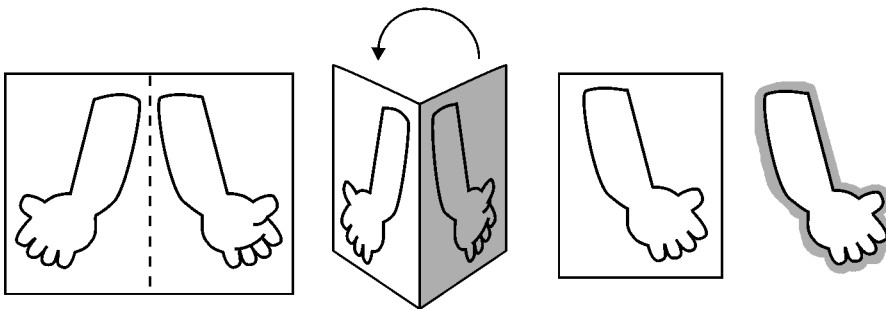
These instructions apply to the basic shape of all mini-people.  
Some mini-people have additional parts.



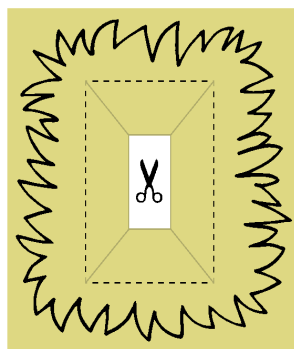
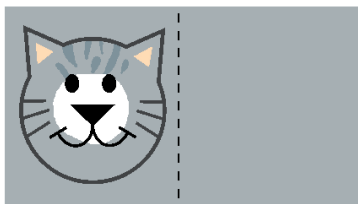
Score, cut, fold, and glue the side first; then glue the top.

**Optional:**  
Before gluing the bottom piece, glue in a small coin to add weight to the mini-people.

To form the arms: Fold in the middle, glue together, and when dry, cut around the arm.



The small dot indicates where to put the glue to attach the arm to the body, so the inside of the hand will be in the right position with the body.

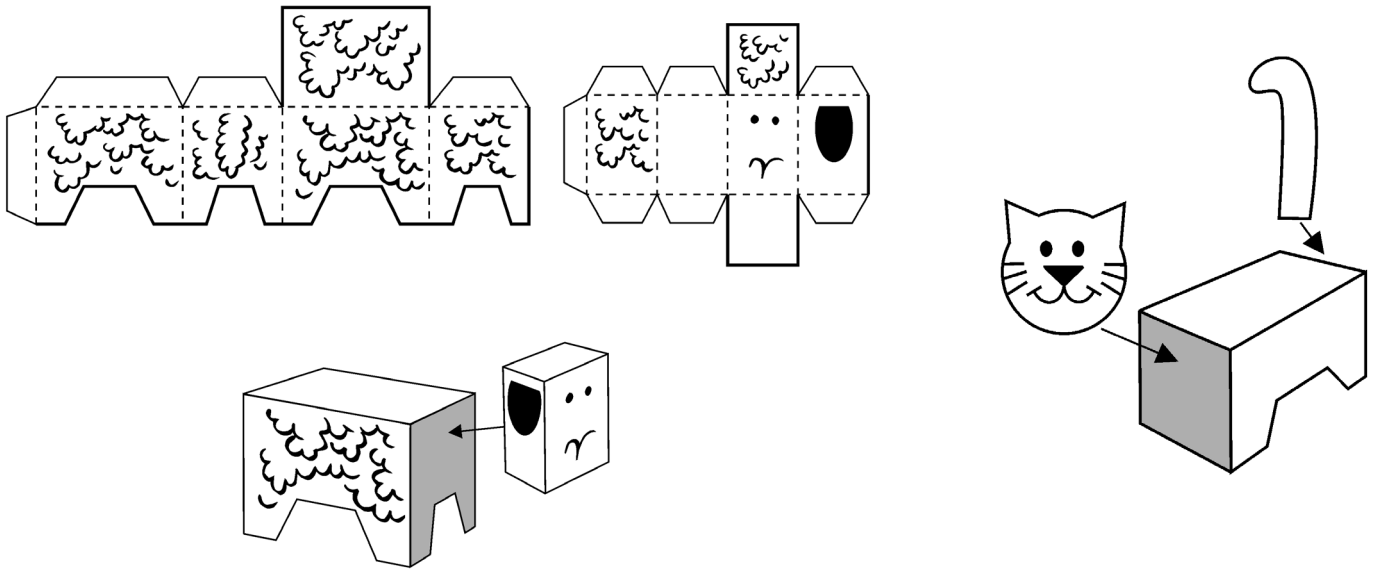


Some pieces have extra color around them, such as people's arms and accessories, for example. Fold these pieces in half and glue before cutting, so that the piece will have texture on both sides.

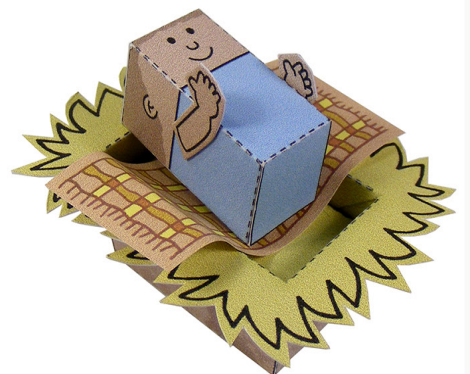
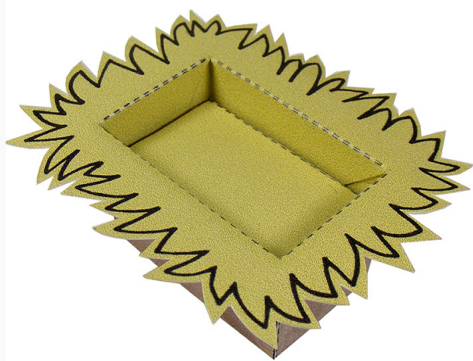
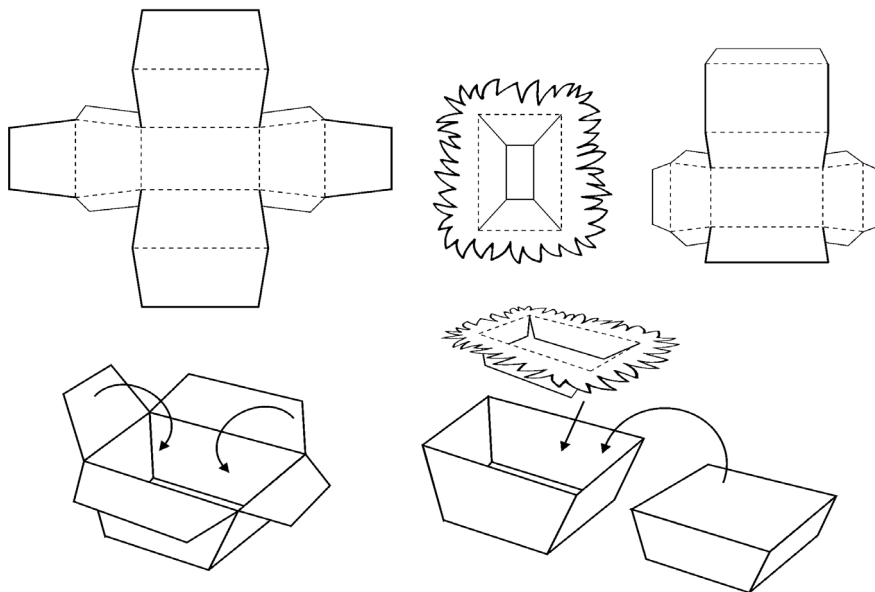
Simply fold along the dotted line and apply some glue, preferably using a glue stick.

Once the glue on the piece has dried, cut it out. You don't have to cut right on the line, it's fine to leave a millimeter or two around it.

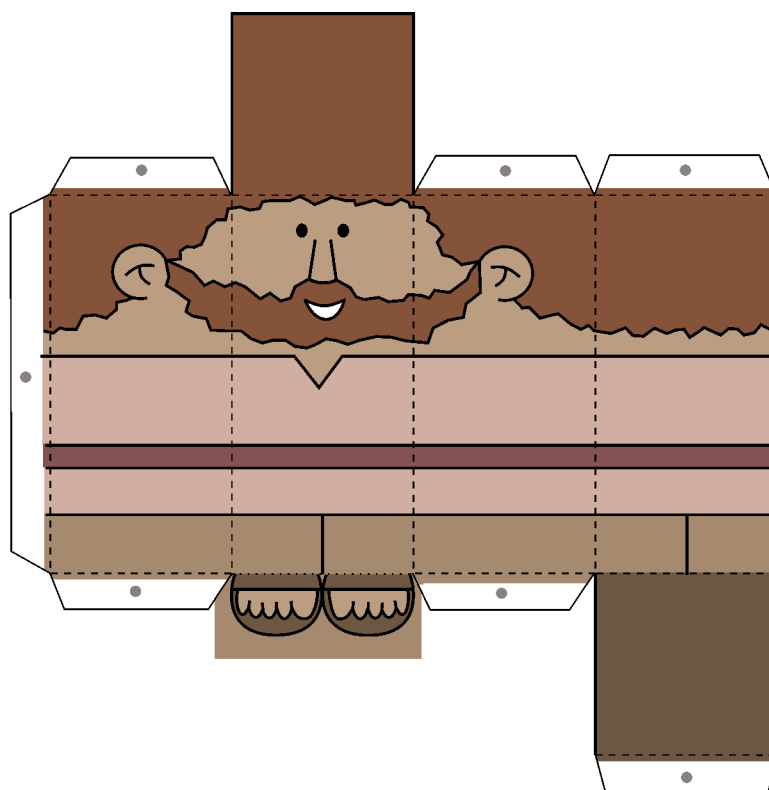
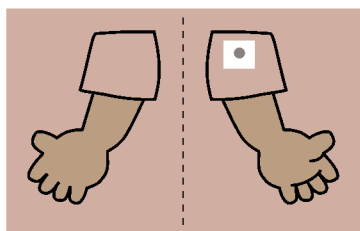
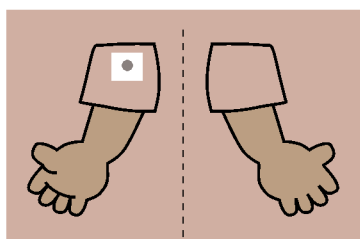
# Assembling the animals



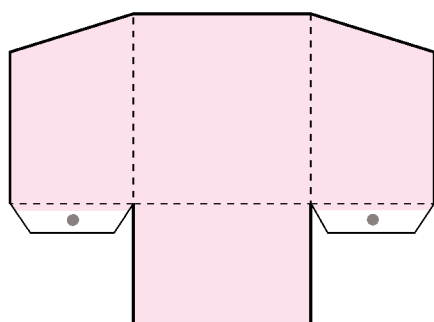
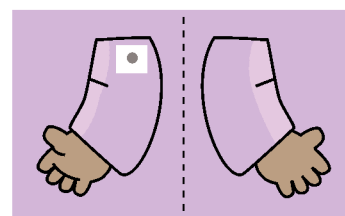
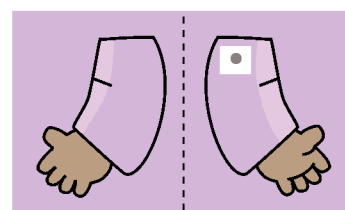
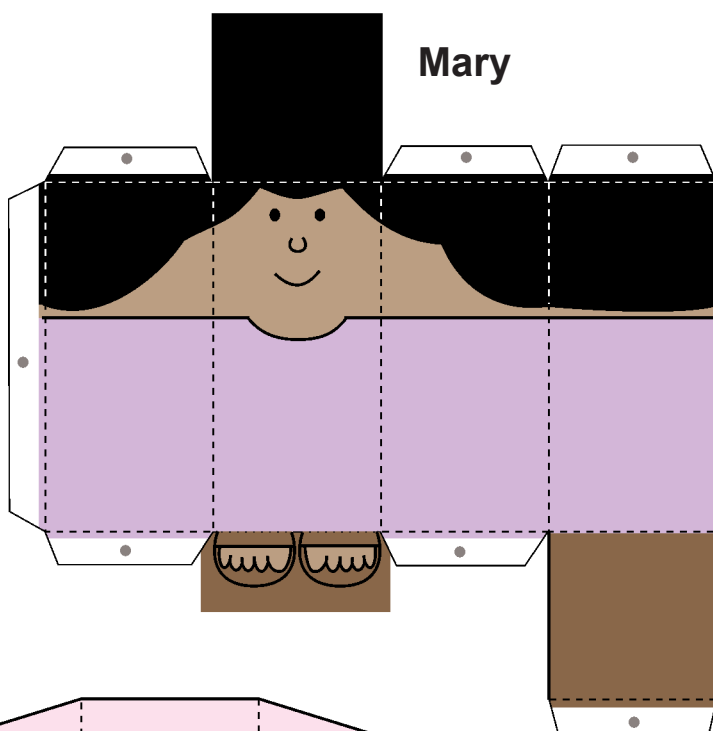
# Assembling the manger



Joseph

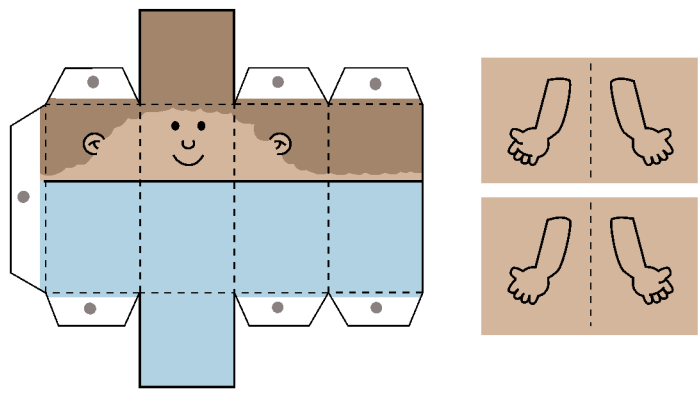


Mary

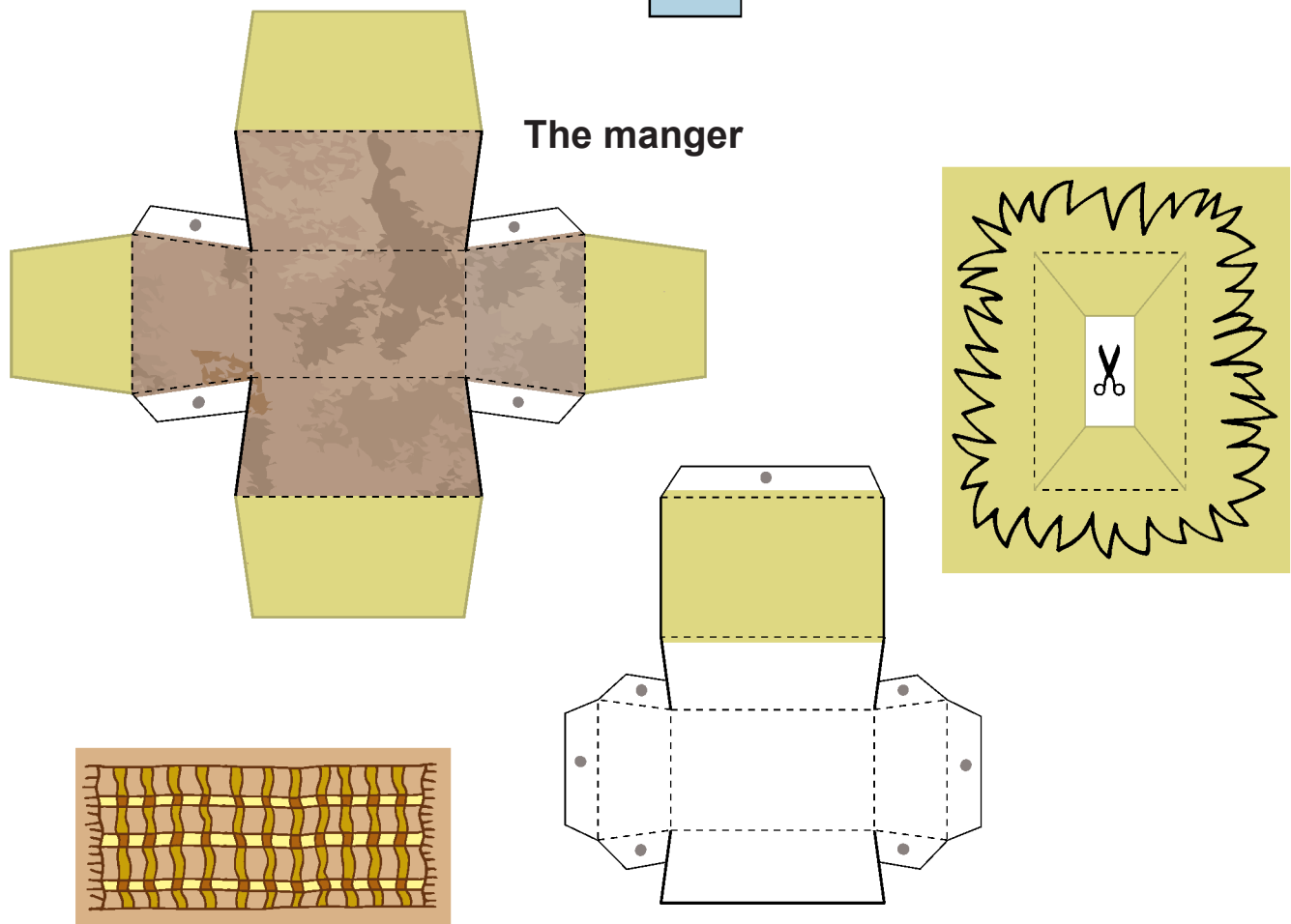




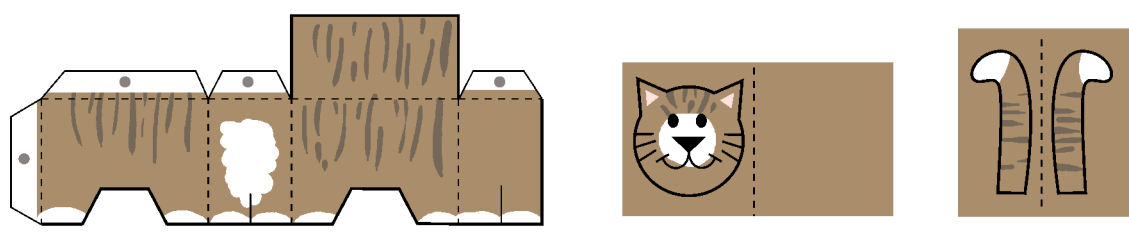
**Baby Jesus**



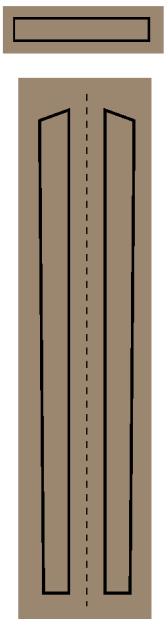
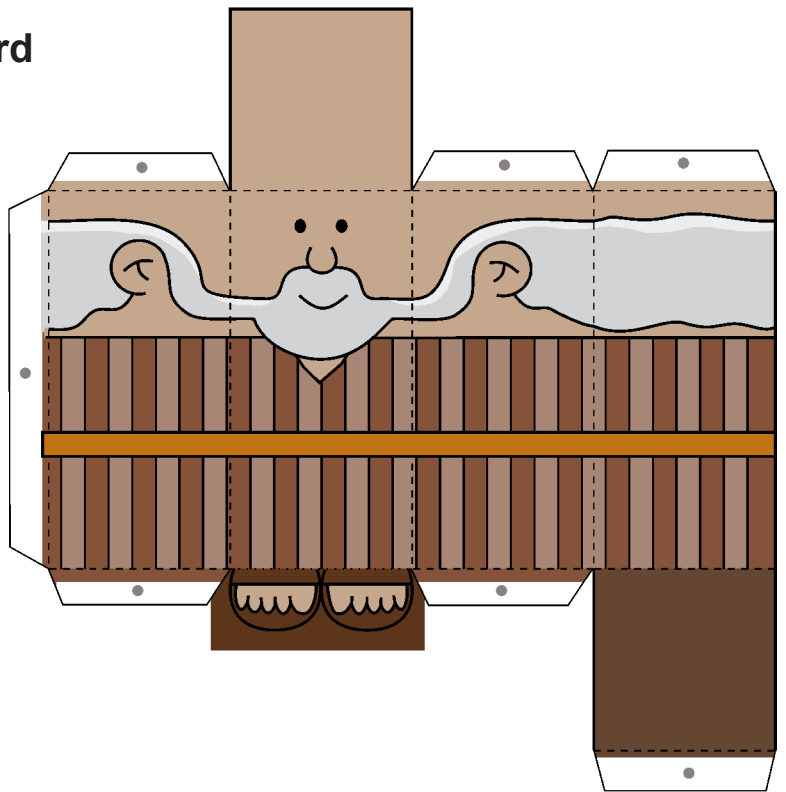
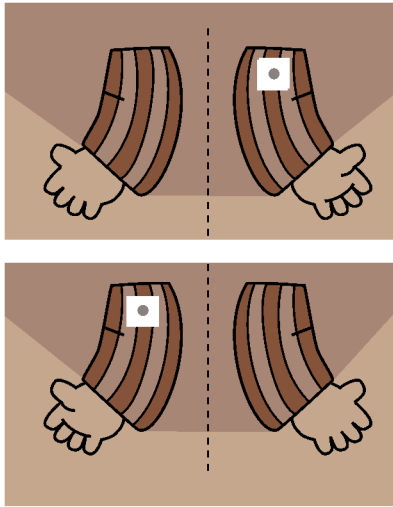
**The manger**



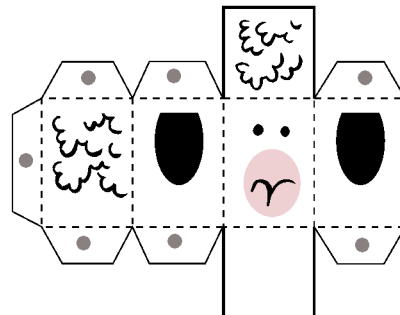
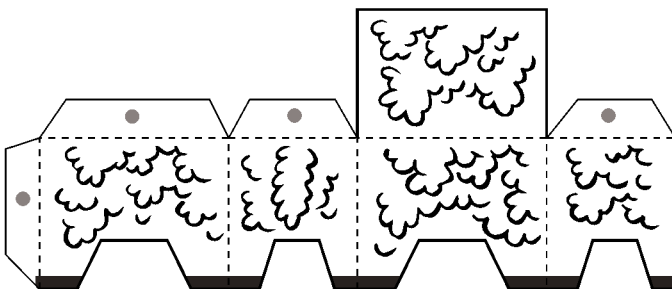
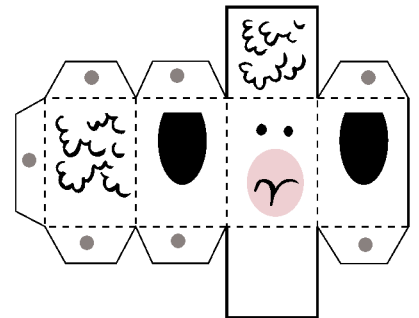
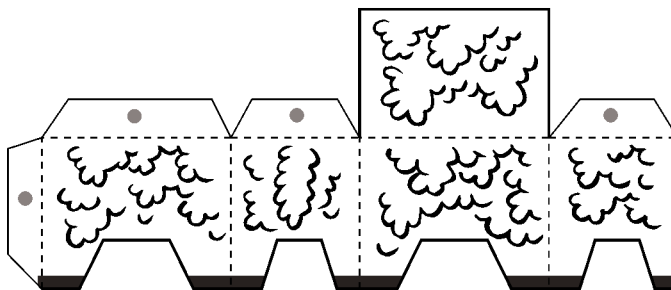
**A cat**



## A shepherd



## sheep



This booklet is a sample set to get you started in assembling the many scenes of the MiniWorld paper toys sets.

Visit my Website for pictures of the many other sets that include detailed scenery, people, animals, and accessories to help you recreate scenes from ancient Bible times, depicting the story of Jesus and the life of Moses.

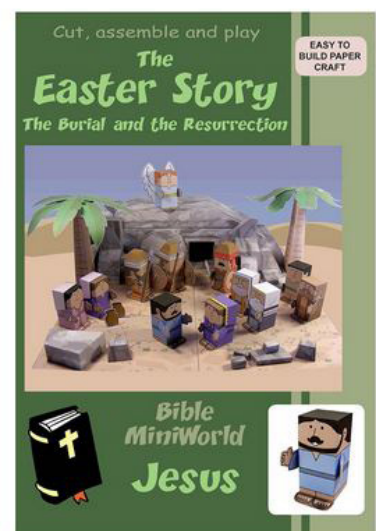
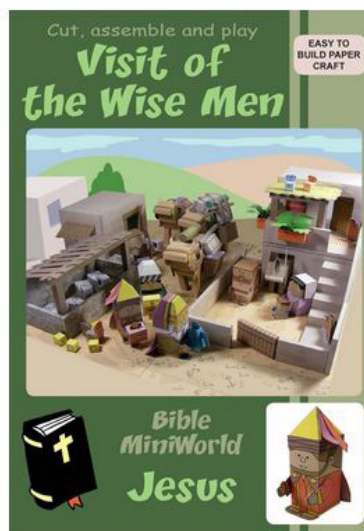
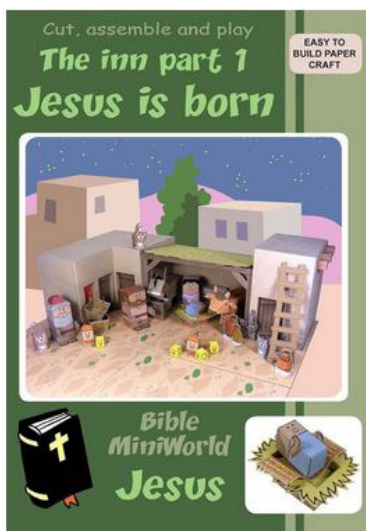
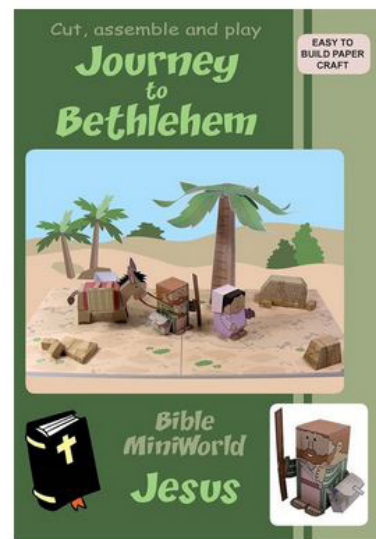
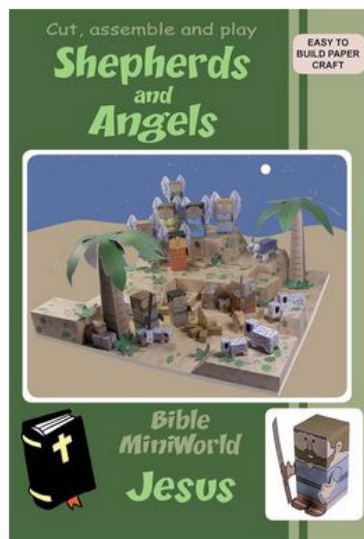
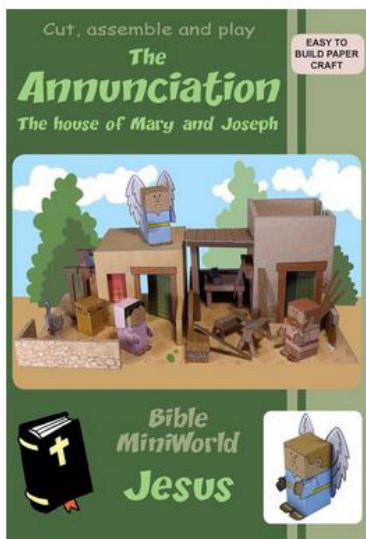
<http://www.mylittlehouse.org/>

These sets are available to download at my Etsy shop at this address:

[https://www.etsy.com/shop/papercraftstoys?ref=hdr\\_shop\\_menu](https://www.etsy.com/shop/papercraftstoys?ref=hdr_shop_menu)

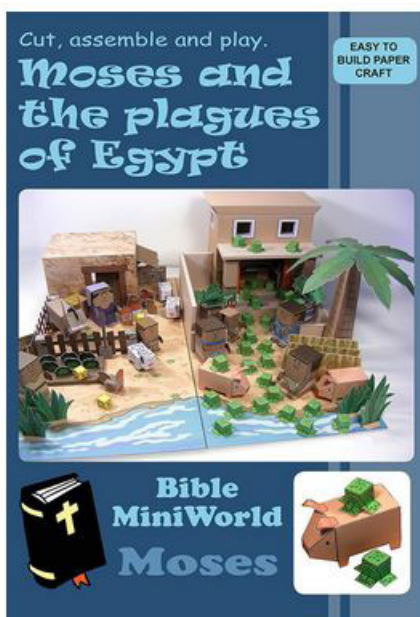
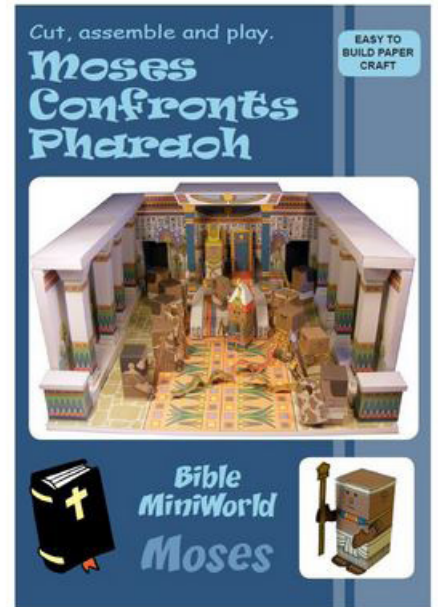
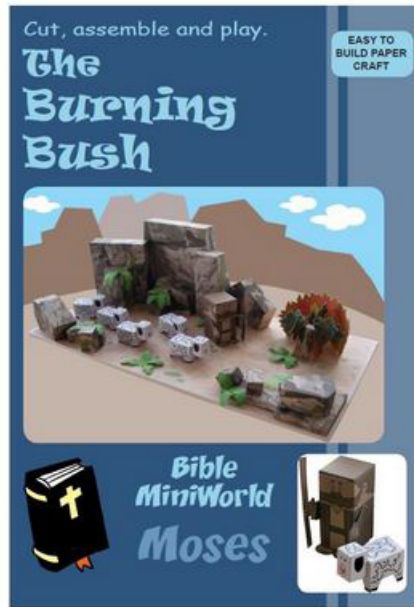
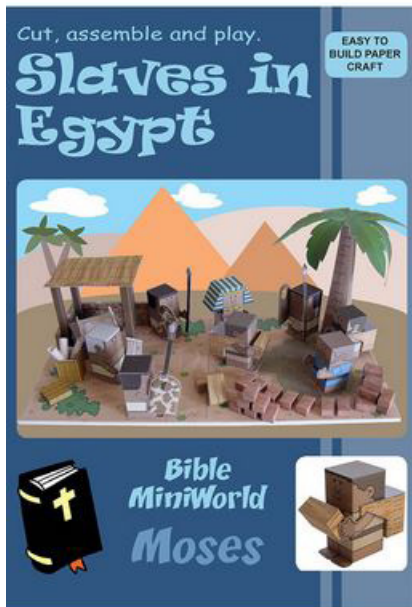
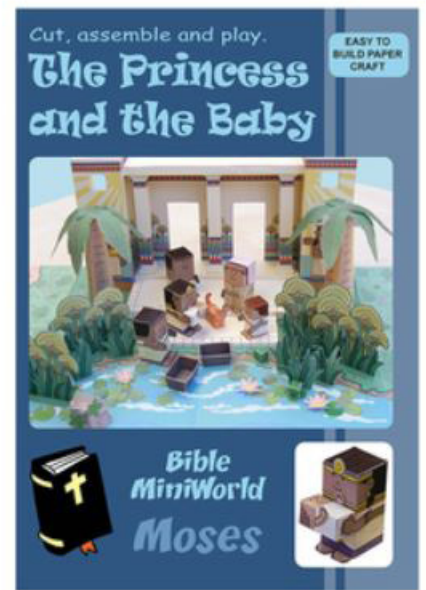
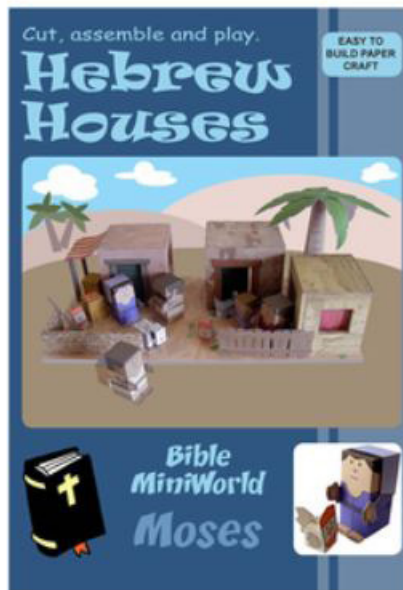


## BIBLE MINIWORLD - JESUS





# BIBLE MINIWORLD - MOSES





## COMPLEMENTARY MINIWORLD SETS

