

BIBLE

Paper Toys



The Easter Story
Assembly
Instructions

Assembly Instructions

TOOLS NEEDED



- Sharp scissors.
- Paper-cutting knife (recommended: X-Acto knife with a #11 blade).
- Sturdy tweezers with smooth edges. (Tweezers with rough edges or teeth will mar the surface of the pieces.)
- Metal ruler to make a straight cut or score.
- Toothpicks for reaching into tiny corners and spreading drops of glue.
- White glue and glue stick.
- Cutting surface (recommended: a cutting mat).
- Dry pen (no ink) or blunt knife for scoring.

Steps To Follow To Assemble Your Model

1. Read the assembly instructions carefully and assemble in order as shown on the diagram pages. Study each of the steps for each section and find the different pieces of the model section. Some pieces may be found on sheets that include pieces from other sections.

2. Cut out all pieces needed to assemble one section, but at this time don't cut along the lines. The different pieces are numbered.

3. Work on one piece at a time:

- Score along the dotted lines.
- Cut along the solid lines.
- Fold along the dotted lines, but don't add glue to any pieces yet.

VERY IMPORTANT: Try out the pieces to be glued before applying the glue. This will help you understand how the pieces fit together, and you will be able to take note of any adjustments that might be needed. Then apply a small amount of glue on the tab indicated by a black dot.

Cutting

Usually, a piece for a card stock model is cut out in two stages.

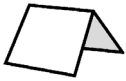
First, the piece is separated from the rest of the pieces by cutting roughly around it with scissors. Don't cut along the lines at this step.

Once the piece is separated, you can work on it without damaging other pieces. It's best to do the scoring and folding before proceeding to the fine cutting.

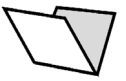
With small pieces and narrow tabs, it's easier to fold them neatly while there is still waste paper surrounding the piece.

Scoring

There are two kinds of folds:



Mountain fold



Valley fold

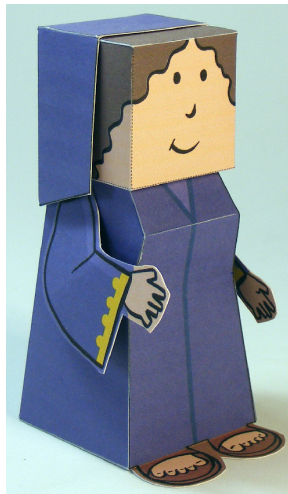
Mountain fold generally means that the texture is on the outside, while on a **valley fold** the texture is usually inside.

Score the fold lines to make a crisp straight fold. It's especially important for the smallest pieces to be scored before folding. To score, place a metal ruler along the fold line, and then press with a dull point (a dry pen or dull knife) along the fold line to compress the paper. This will help to achieve a crisp fold.

Most pieces on the castle require a **mountain fold**, though a few use a **valley fold**. Valley folds will be indicated on the model pieces and in the instruction manual with the valley fold symbol.

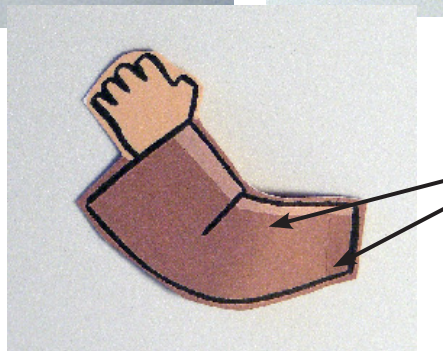
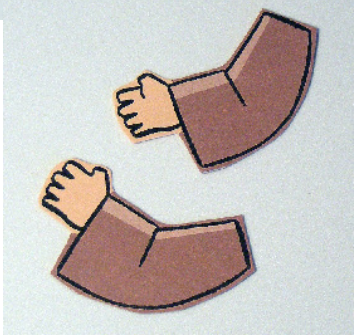
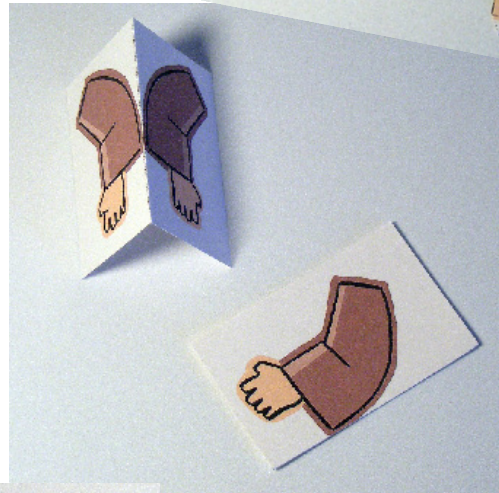
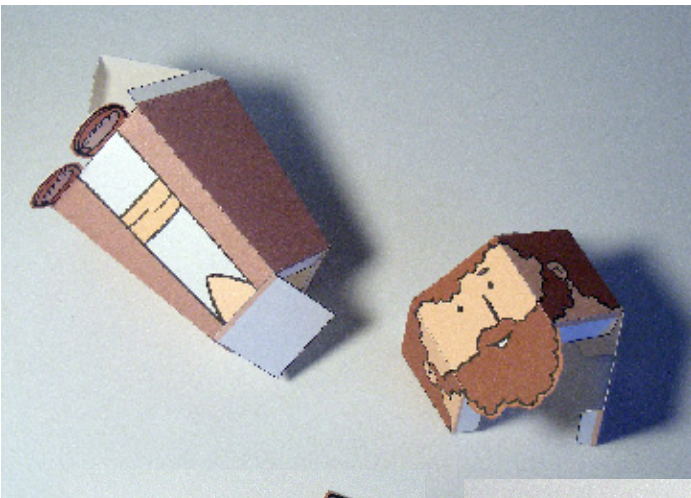
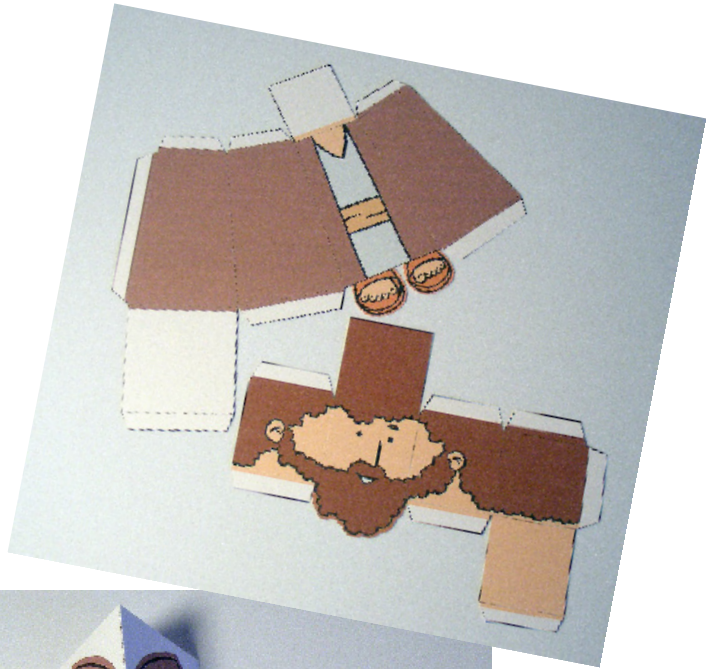
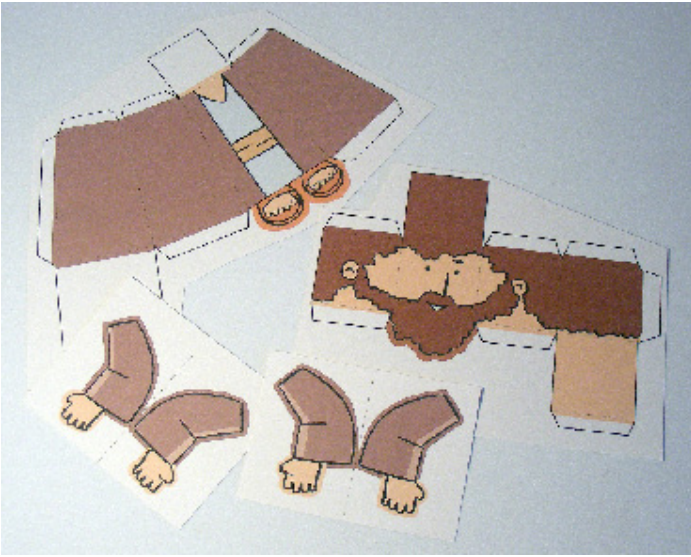
Caution

- Be careful when using scissors or a paper cutting knife.
- Glue, scissors, and other tools may be dangerous, so be sure to keep them out of the reach of young children.



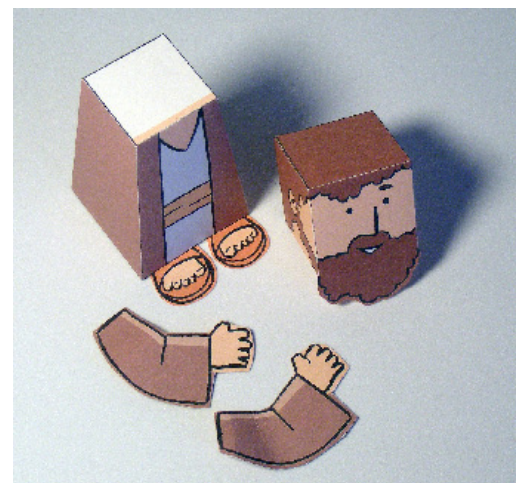
And remember,
there is no hurry.
TAKE YOUR TIME!

Assembling the people

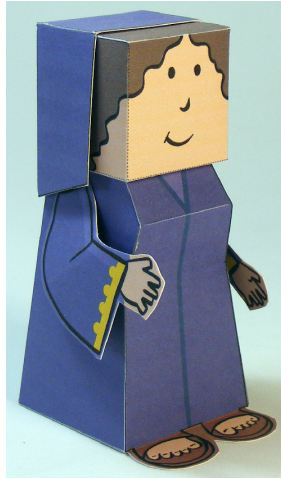


Fold the arm slightly before gluing to give a small effect.

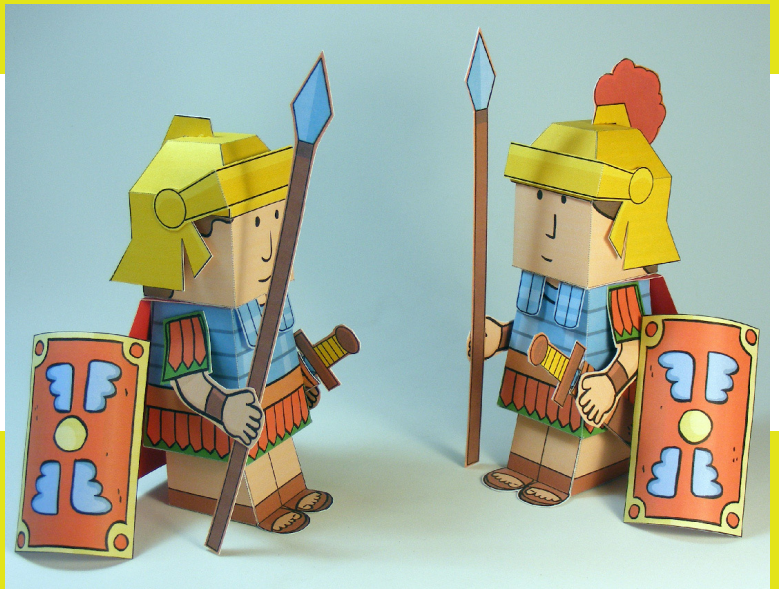
Tip: When cutting around the arms or other similar pieces, you don't necessarily have to cut right on the black line. You can cut a millimeter or two from it outside in the colored area.



Jesus, Mary and 2 angels



The Roman Soldiers



The Tomb

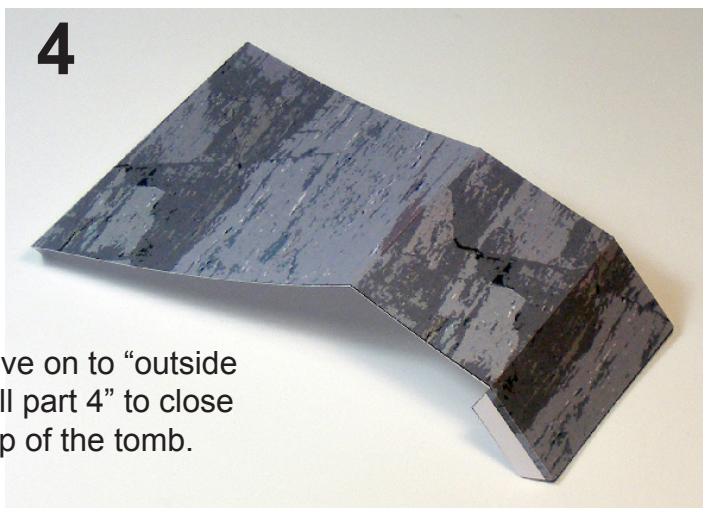
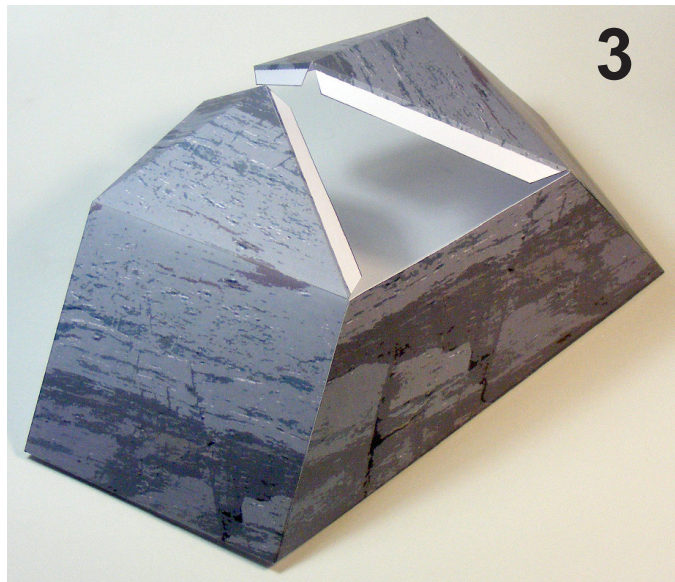
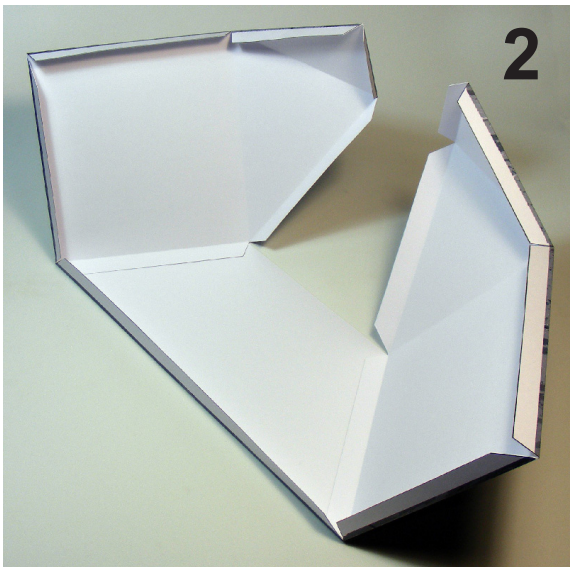


Assembling the tomb

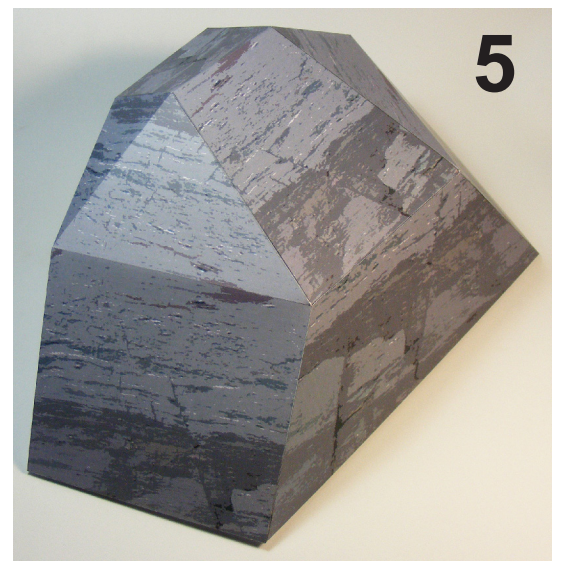


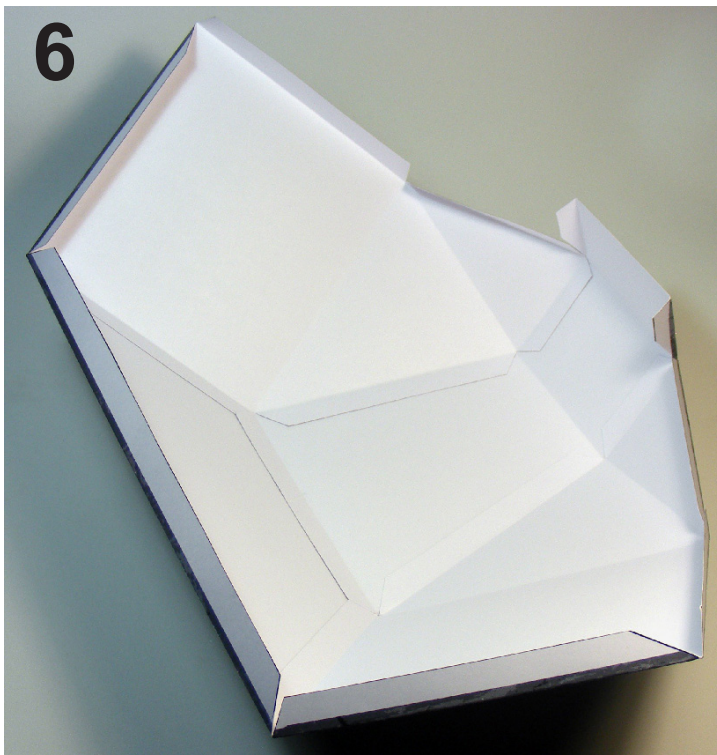
This model may seem complicated, but if you follow the steps below carefully it is not difficult. Take your time and try out the different pieces before gluing them to understand how they fit together.

Start with “outside tomb wall part 1, 2 and 3.”



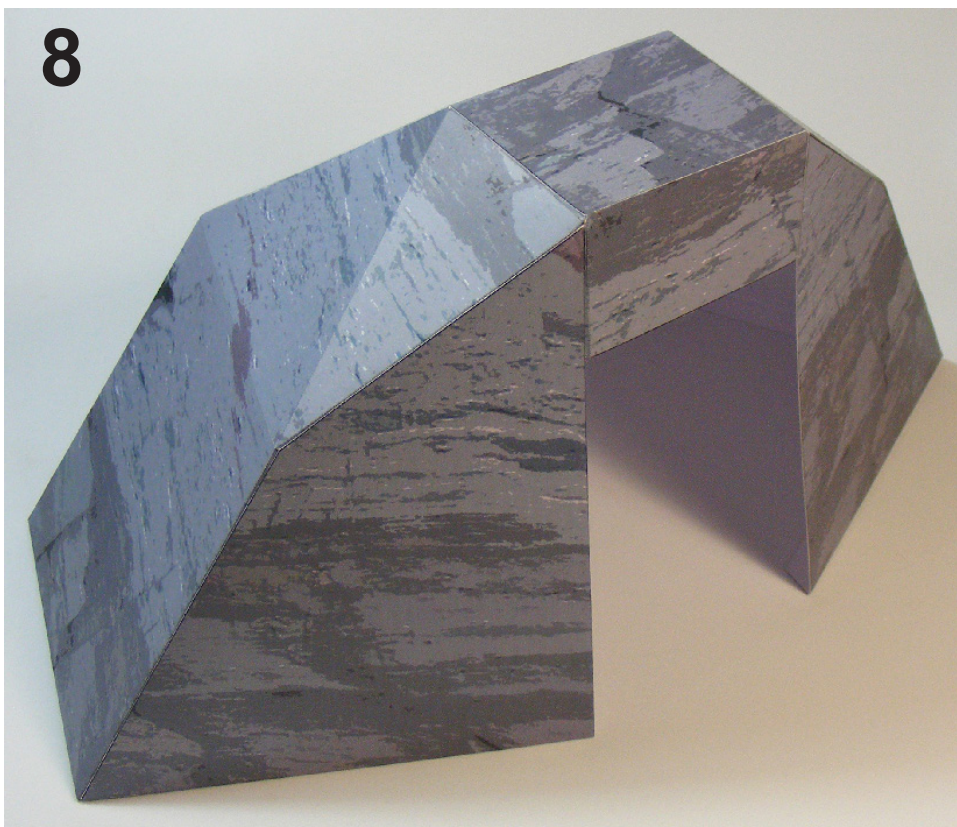
Then move on to “outside tomb wall part 4” to close the top of the tomb.





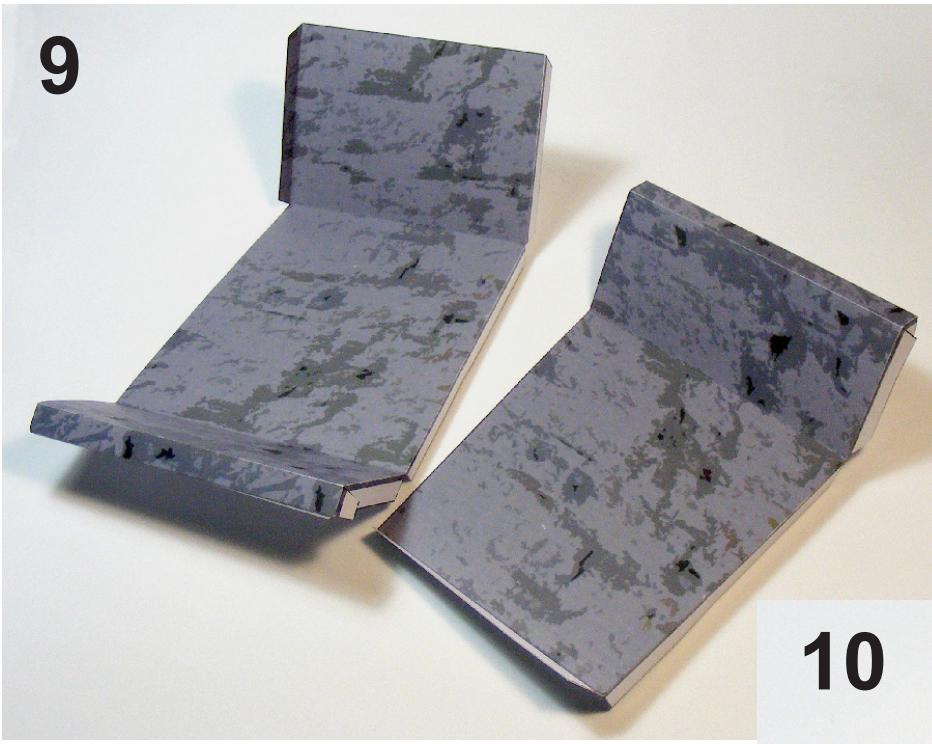
This is a view from inside the model. At this point, don't be concerned about the strength of the model. As you add the others parts the model will stand properly.

Now glue "outside tomb wall part 5 and 6" to the front of the tomb.



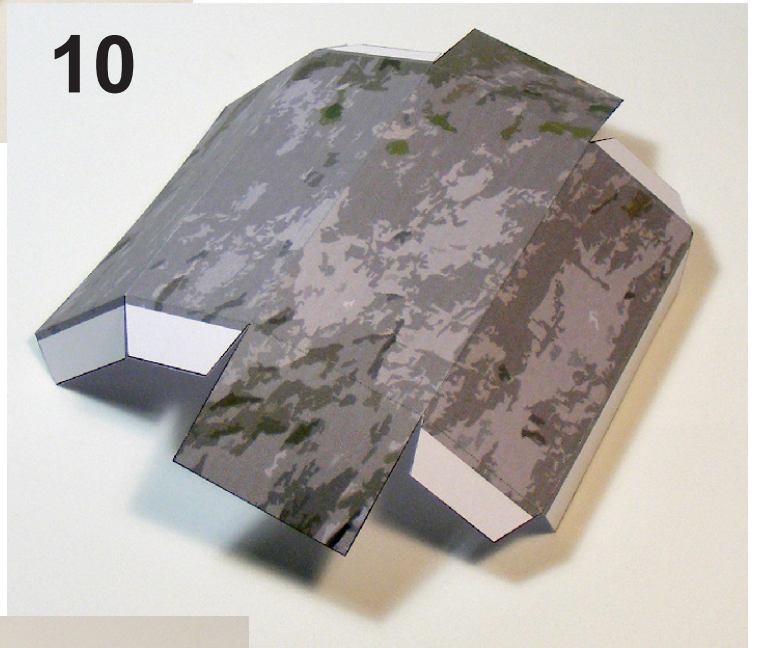
Here is a photo of the final model of the exterior wall of the tomb.

9



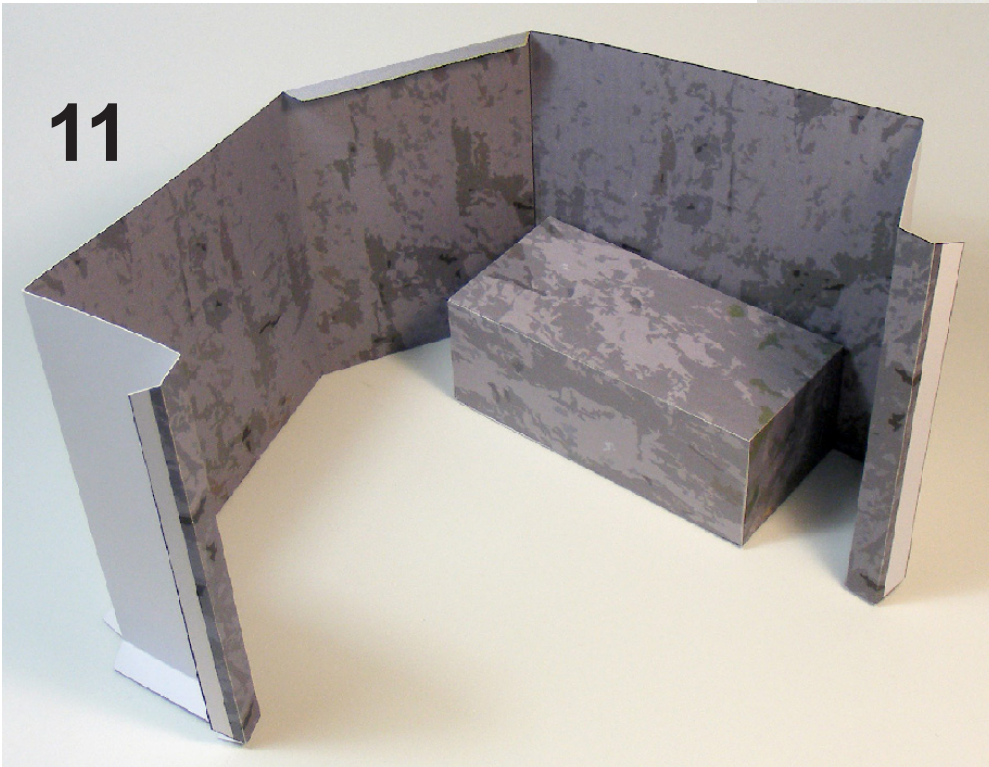
Now for the inside of the tomb, glue together the inside wall of the tomb parts 7 and 8. Look carefully, as some parts need the “valley fold.”

10



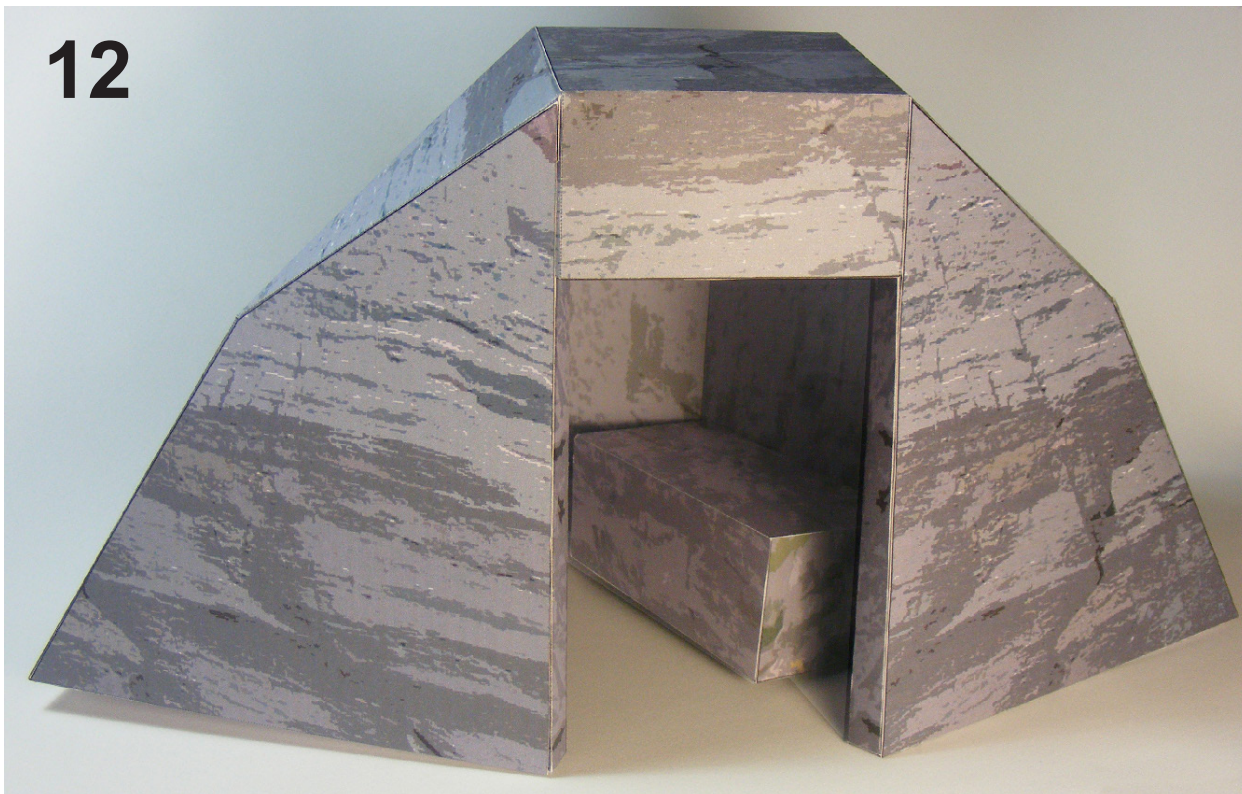
This will form a wall, next put together the “stone bed” part 9 and glue it against the inside wall as in the photo.

11

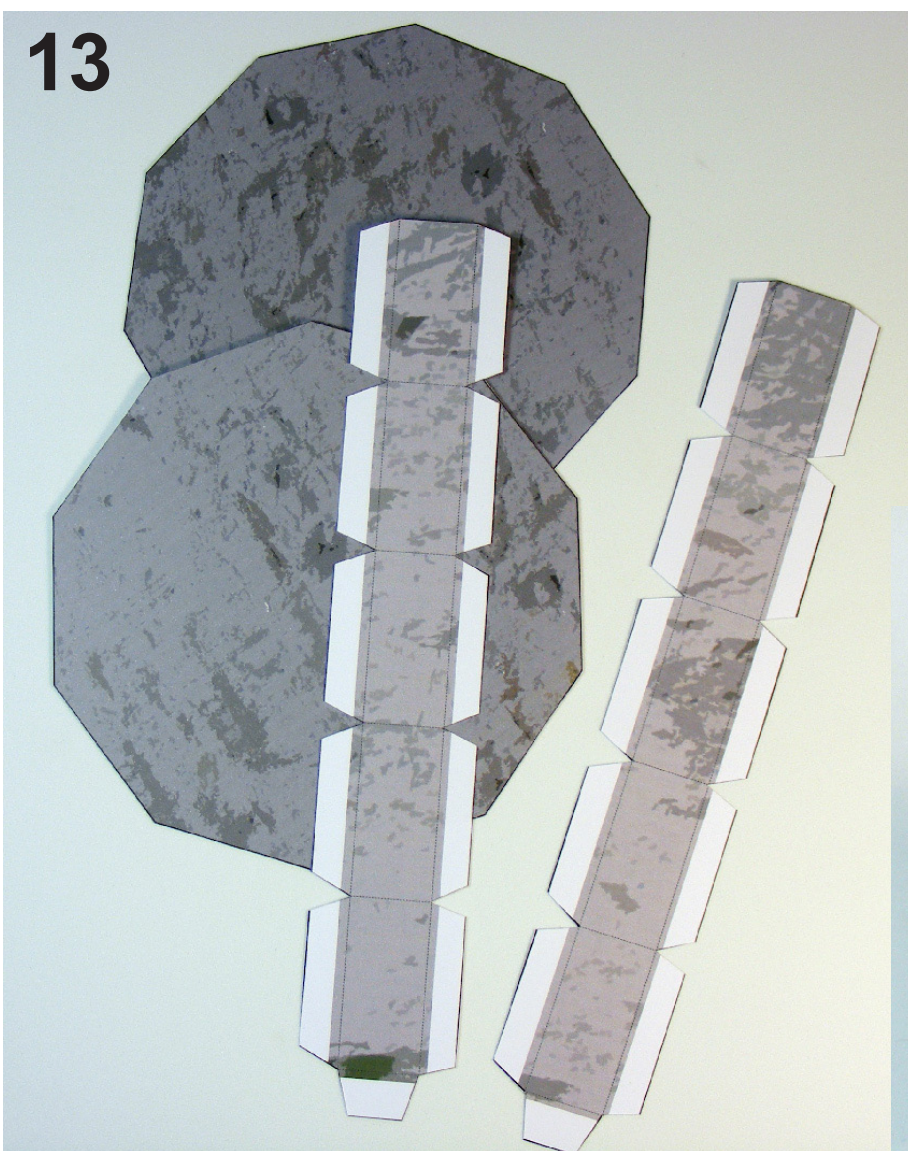


Then glue this wall inside the tomb rock to finish the tomb.

12



13

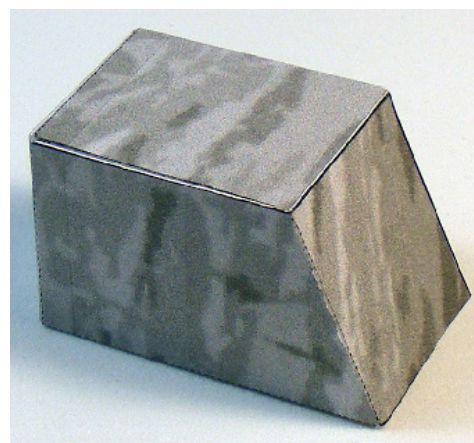
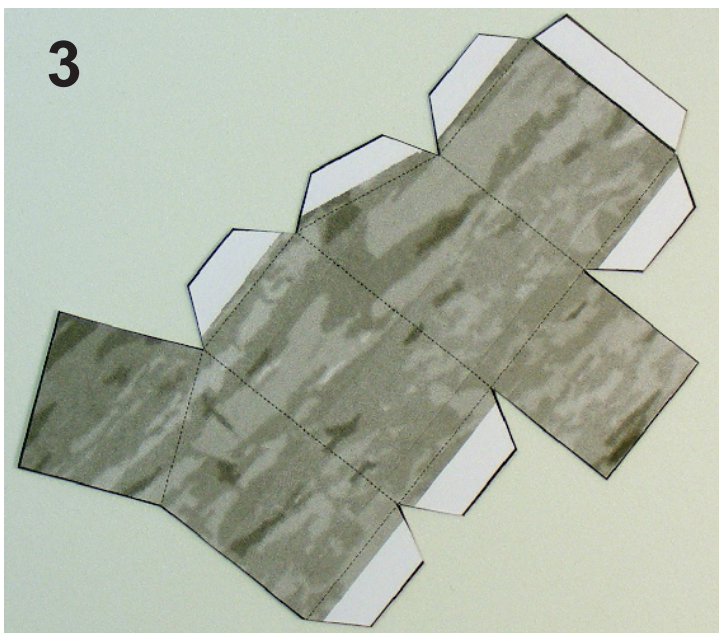
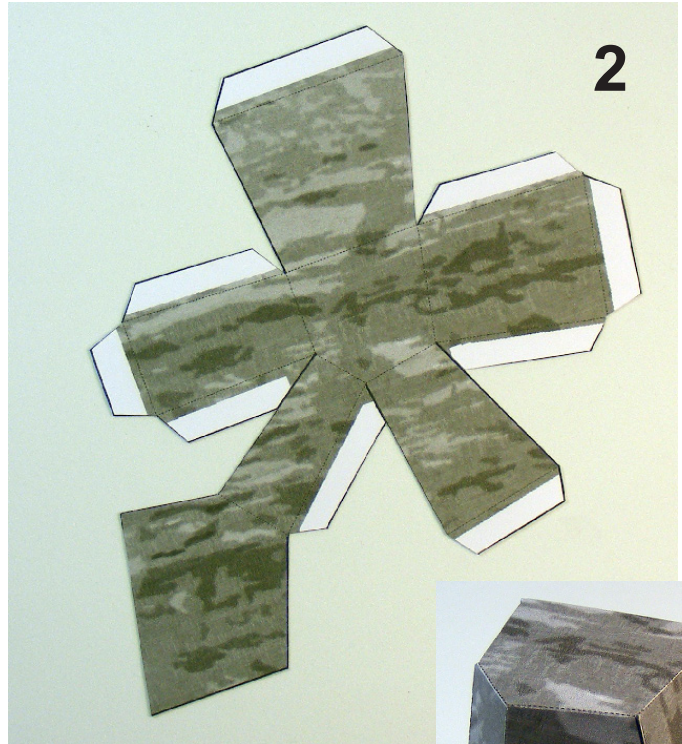
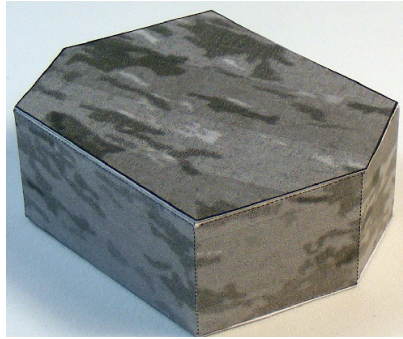
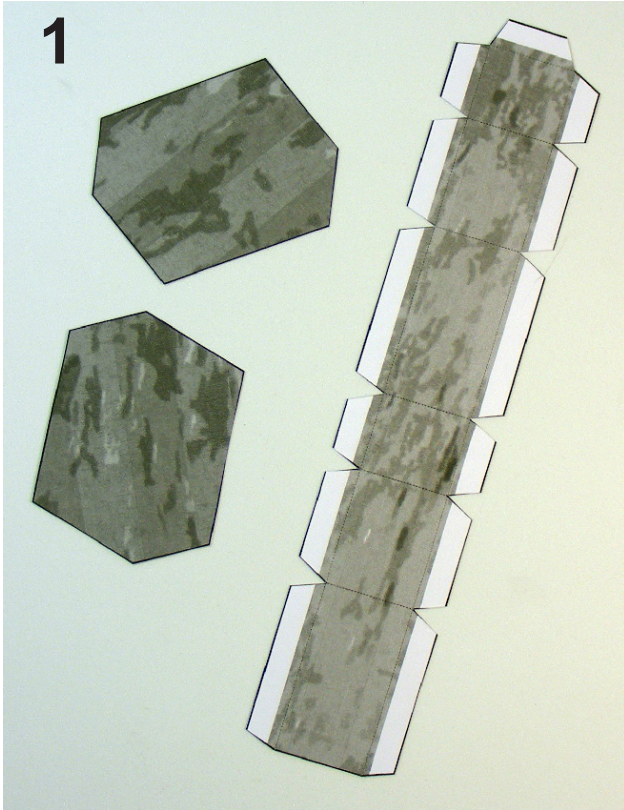


To assemble the round stone for the entrance of the tomb: Glue the two strips together to form the rim of the stone, then glue both sides of the stone in place.

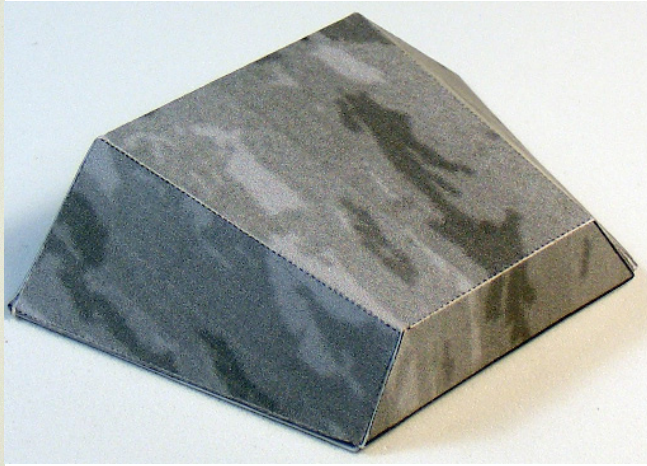
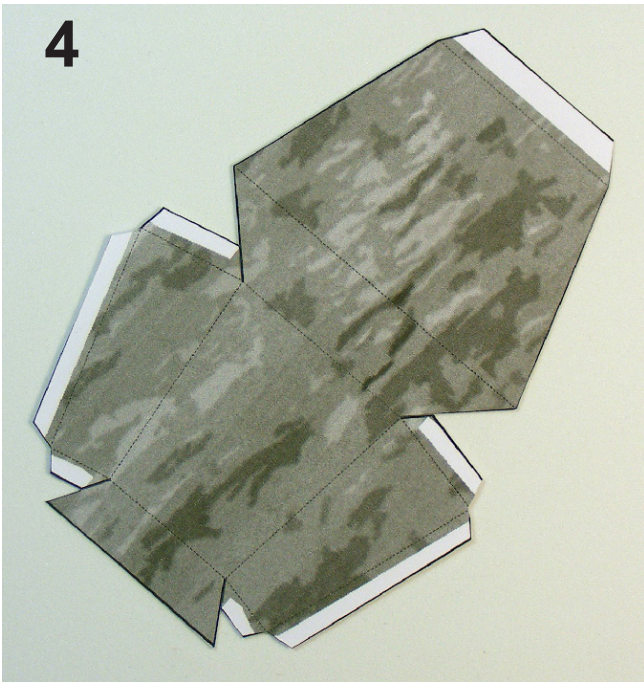
14



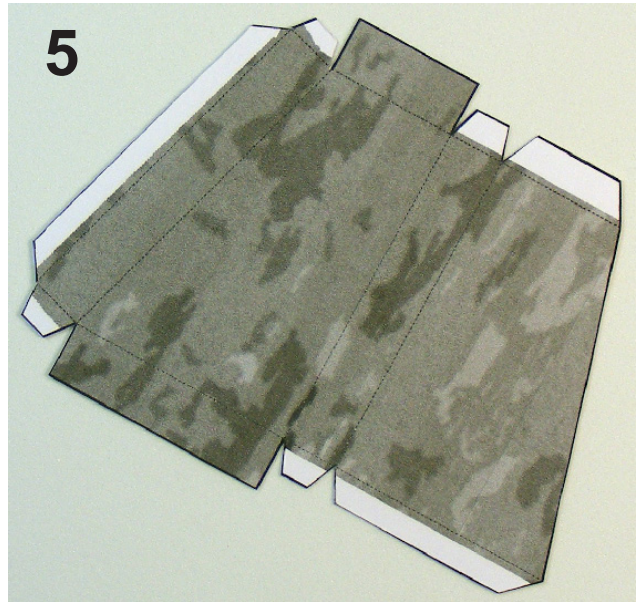
Assembling the rocks -



4



5



6

