

Cut, assemble and play

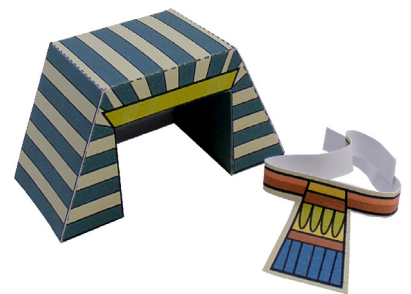
Heroes of Faith

Moses

EASY TO
BUILD PAPER
CRAFT



Bible
MiniWorld
Old
Testament



General Assembly Instructions

TOOLS NEEDED



- Sharp scissors.
- Paper-cutting knife (recommended: X-Acto knife with a #11 blade).
- Sturdy tweezers with smooth edges. (Tweezers with rough edges or teeth will mar the surface of the pieces.)
- Metal ruler to make a straight cut or score.
- Toothpicks for reaching into tiny corners and spreading drops of glue.
- White glue and glue stick.
- Cutting surface (recommended: a cutting mat).
- Dry pen (no ink) or blunt knife for scoring.

- Print pages 9 to 11 on White Card Stock paper (sometimes called Cover Paper or Bristol), 160 grammes (recommended) or 190-200 grammes (110 lbs), preferably non glossy but with a mat finish.

Cutting

Usually, a piece for a card stock model is cut out in two stages.

First, the piece is separated from the rest of the pieces by cutting roughly around it with scissors. Don't cut along the lines at this step.

Once the piece is separated, you can work on it without damaging other pieces. It's best to do the scoring and folding before proceeding to the fine cutting.

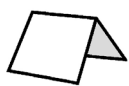
Work on one piece at a time:

- Score along the dotted lines.
- Cut along the solid lines.
- Fold along the dotted lines, but don't add glue to any pieces yet.

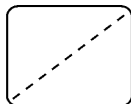
VERY IMPORTANT: Try out the pieces to be glued before applying the glue. This will help you understand how the pieces fit together, and you will be able to take note of any adjustments that might be needed. Then apply a small amount of glue on the tab indicated by a black dot.

Scoring

There are two kinds of folds:



Mountain fold



Valley fold



Mountain fold generally means that the texture is on the outside, while on a **valley fold** the texture is usually inside.

Score the fold lines to make a crisp straight fold. It's especially important for the smallest pieces to be scored before folding. To score, place a metal ruler along the fold line, and then press with a dull point (a dry pen or dull knife) along the fold line to compress the paper. This will help to achieve a crisp fold.

Most pieces on the model require a **mountain fold**, though a few use a **valley fold**. Valley folds will be indicated on the model pieces with the valley fold symbol.

Follow the steps for assembling described in the following pages. Some parts may seem to be complex, but none are complicated to assemble. Simply create one part at a time while following the order of assembly, and always try out the pieces first without glue to understand how they fit together.

Look at the final photos and the different illustrations, and with patience you will be able to create a great model.

Use a toothpick to apply a small drop of glue and a tweezer to hold the small pieces. There are a few tips added to the instructions to help you along the way.

An important key for a well-assembled model is to score neatly every piece along the dotted line, then to prefold everything before gluing.

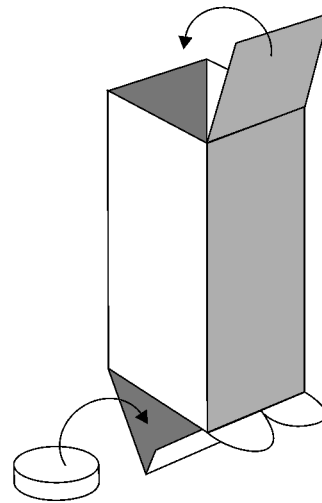
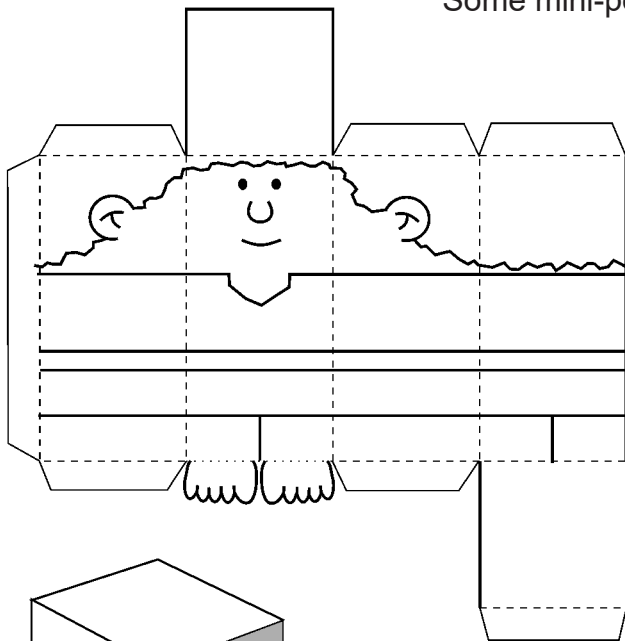
- Be careful when using scissors or a paper cutting knife.
- Glue, scissors, and other tools may be dangerous, so be sure to keep them out of the reach of young children.

And remember,
there is no hurry.
TAKE YOUR
TIME!



Assembling the Mini-people

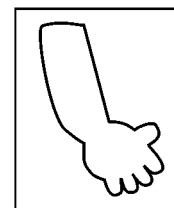
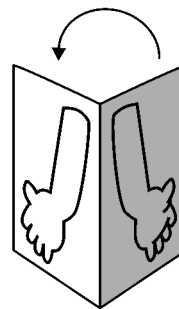
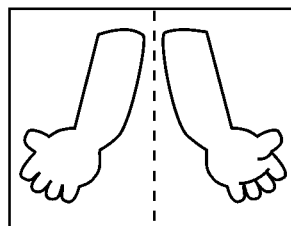
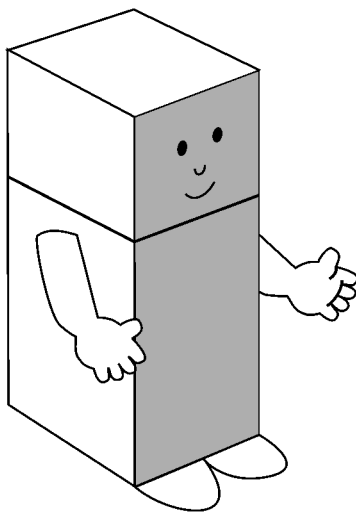
These instructions apply to the basic shape of all mini-people. Some mini-people have additional parts.



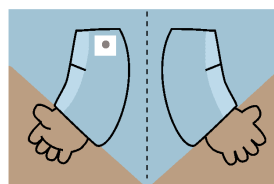
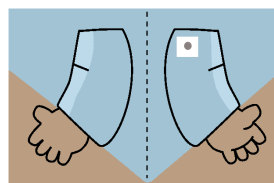
Score, cut, fold, and glue the side first; then glue the top.

Optional:
Before gluing the bottom piece, glue in a small coin to add weight to the mini-people.

To form the arms: Fold in the middle, glue together, and when dry, cut around the arm.



The small dot indicates where to put the glue to attach the arm to the body so that each arm is on the correct side of the body.



Some pieces have extra color around them, such as people's arms and accessories, for example. Fold these pieces in half and glue before cutting so that the piece will have texture on both sides.

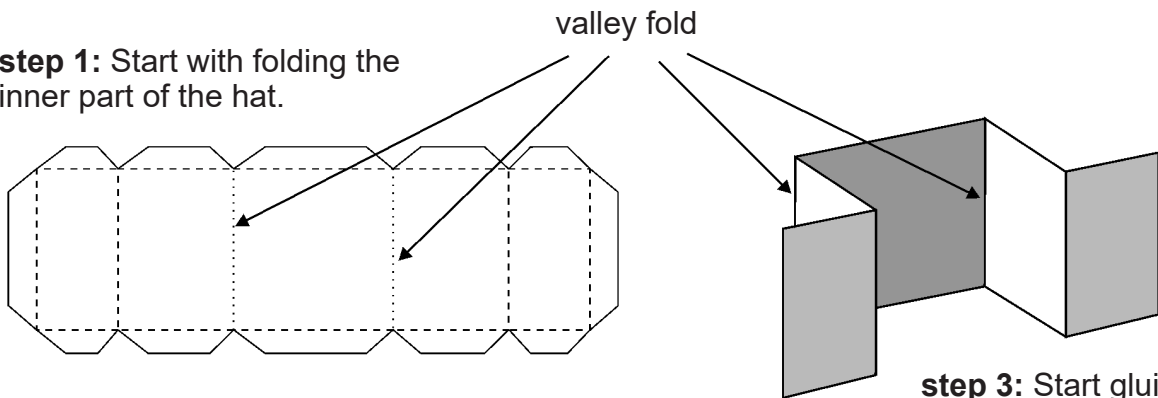
Simply fold along the dotted line and apply some glue, preferably using a glue stick.

Once the glue on the piece has dried, cut it out. You don't have to cut right on the line, it's fine to leave a millimeter or two around it.

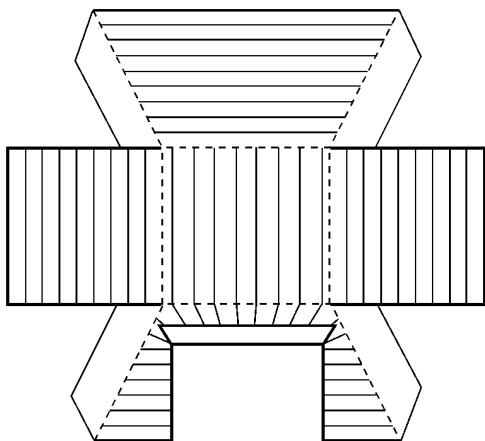
Assembling the Egyptian hat

It seems a little complicated, but follow these steps and instructions and it will come out well.

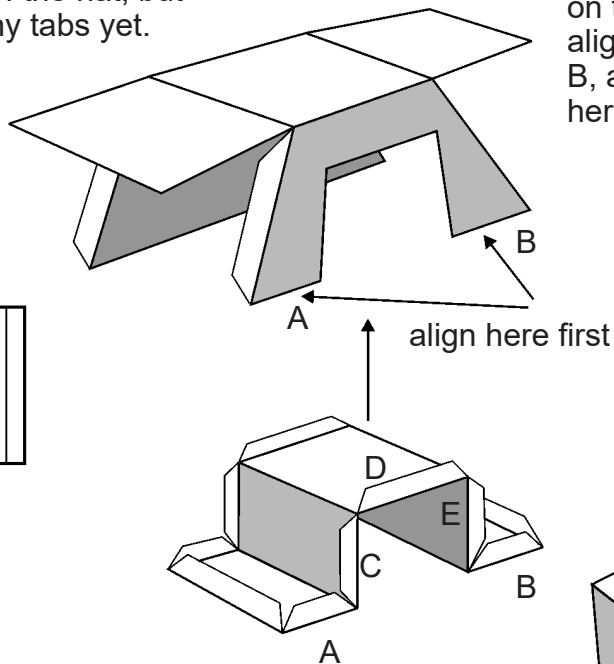
step 1: Start with folding the inner part of the hat.



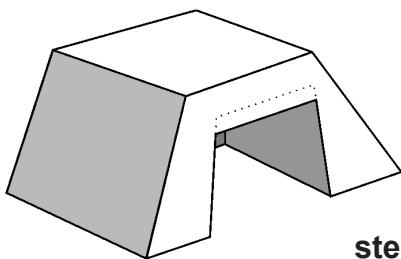
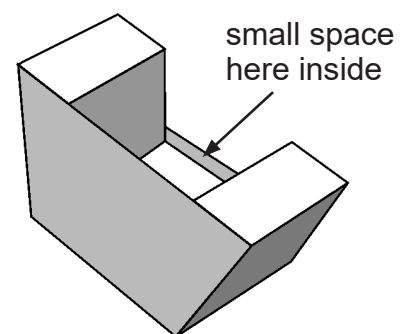
step 2: Cut, score, and fold the outside of the hat, but don't glue any tabs yet.



step 3: Start gluing the inner part of the hat inside. **IMPORTANT** start gluing on the front side first, aligning the 2 tabs, A and B, as shown in the picture here.

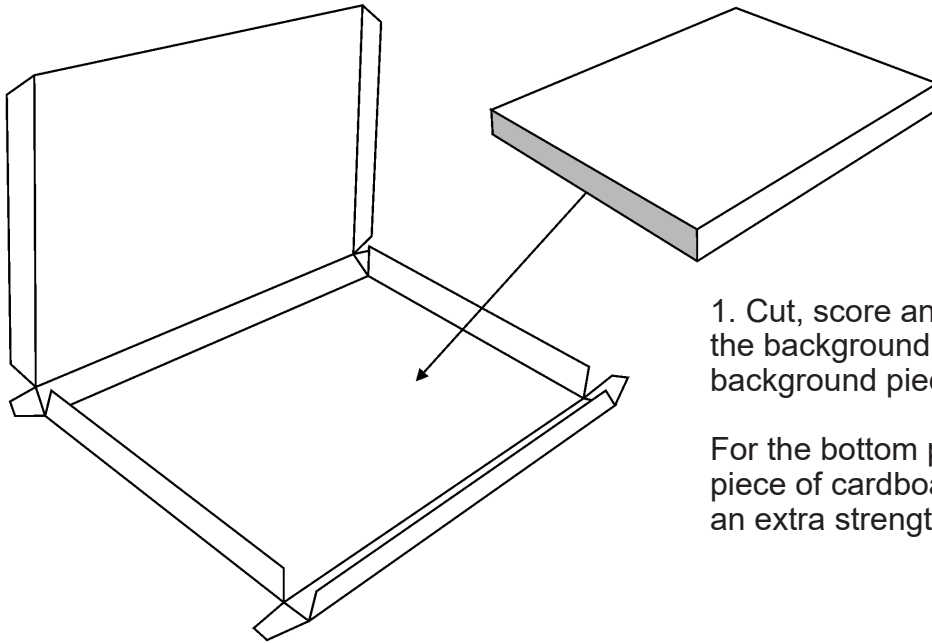


Then glue the 3 other tabs (C, D, E) in the front. after gluing the tabs you will see that the tab D doesn't align but is slightly inside the hat. This is normal and will help to hold the hat on the head of the mini-people.



step 4: Finish gluing the rest of the tabs to the back of the hat. Then simply fold down and glue the 2 sides of the hat.

Assembling the background

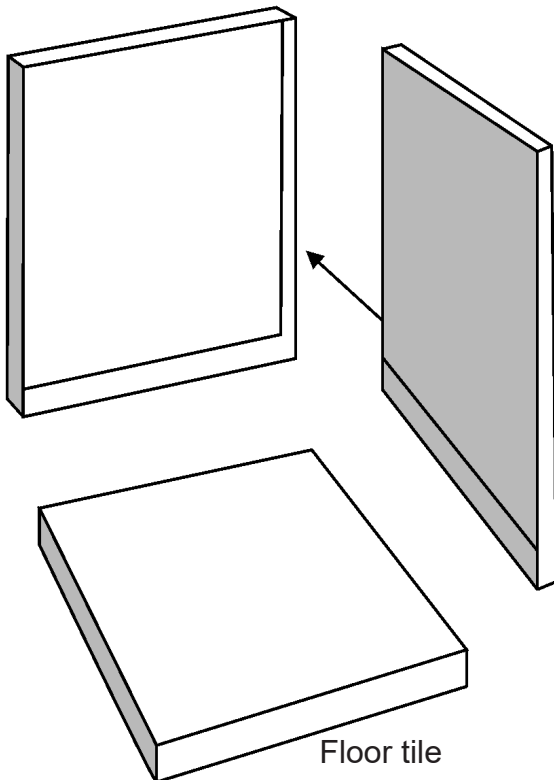


1. Cut, score and assemble the 3 parts of the background stand (the floor tile, and the background piece A and B).

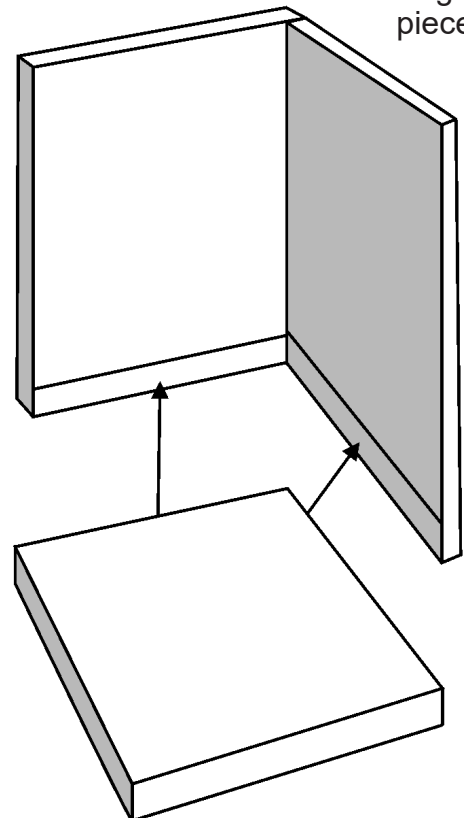
For the bottom piece you need to insert a piece of cardboard or foam 5 mm thick to add an extra strength

2. Assemble the 3 parts of background and glue them together as shown here.

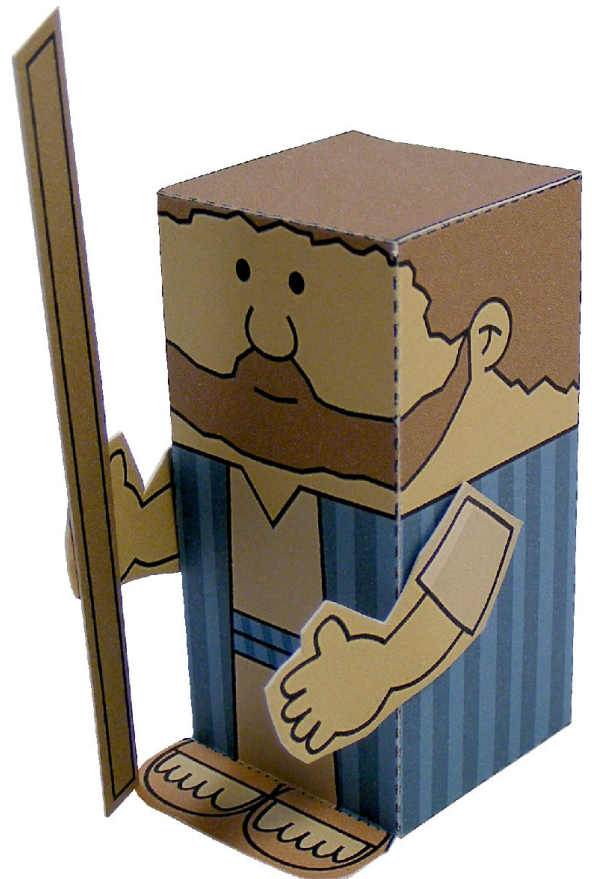
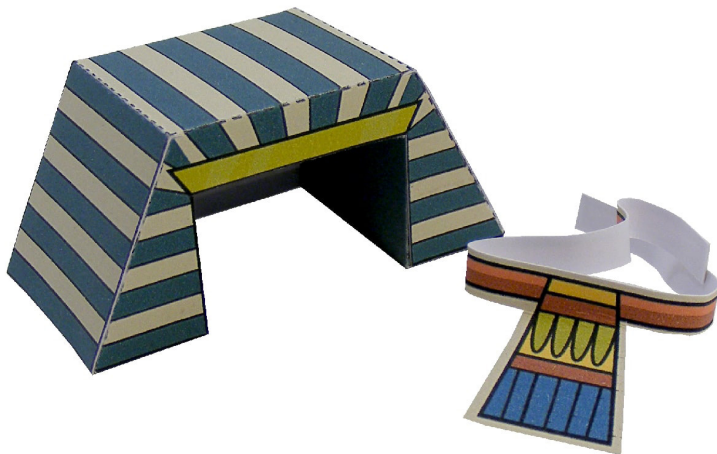
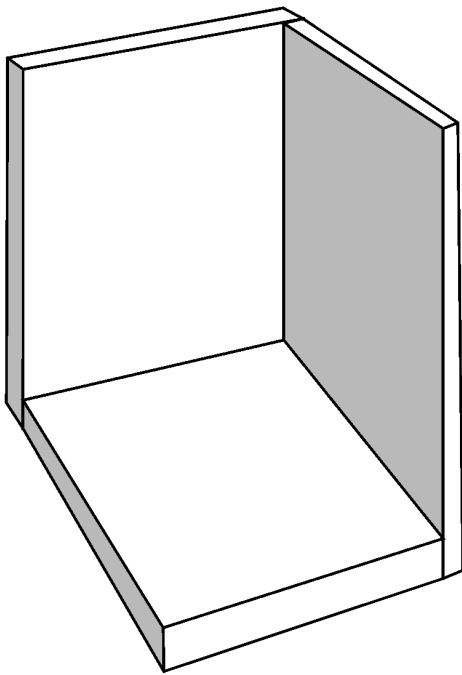
Background piece A

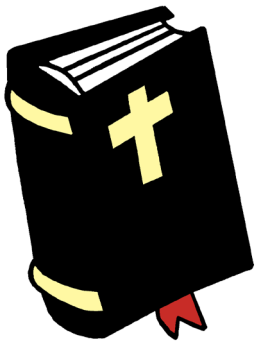


Background piece B



Glue the floor tile to the background pieces.





Heroes of Faith – Moses

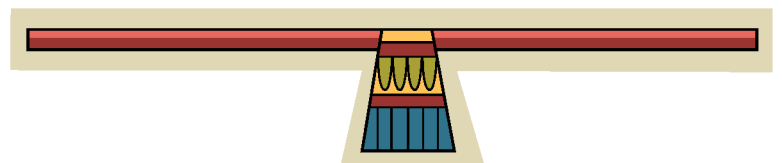
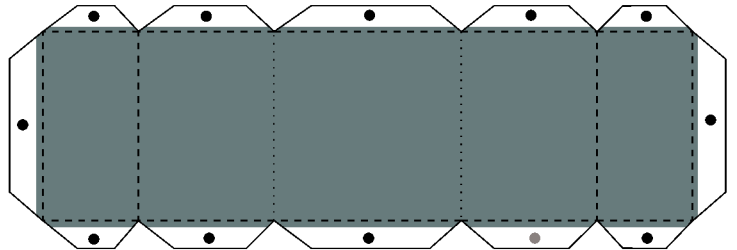
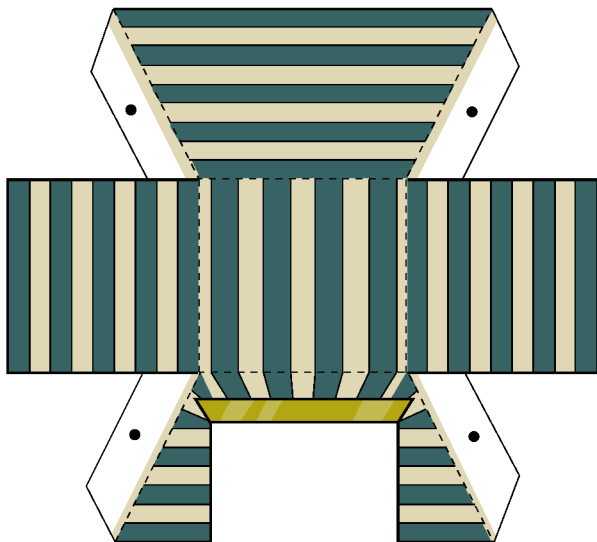
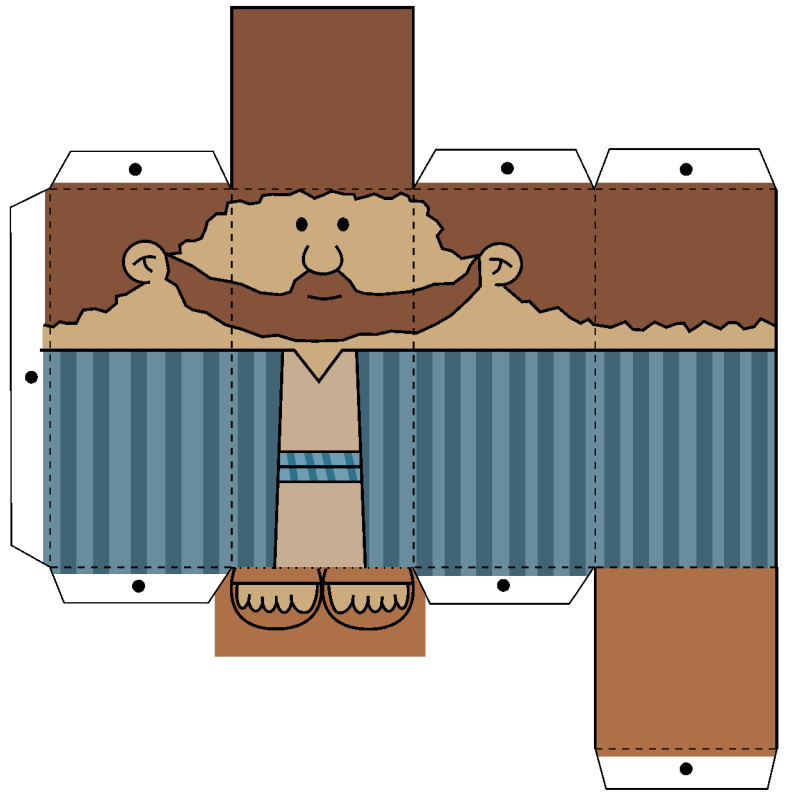
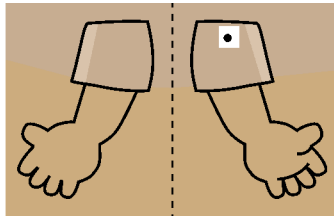
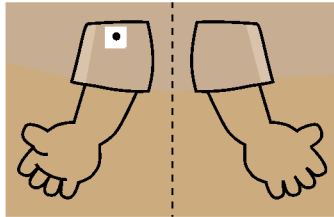
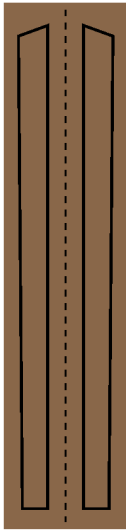
Hebrew 11 tells us: It was faith that made the parents of Moses hide him from the Egyptians after he was born because there was an order to kill every male baby the Hebrew women gave birth to.

After baby Moses was found by Pharaoh's daughter, he was raised in the Egyptian palace. But later as an adult, it was faith that caused him to change and prefer suffering with God's people, deciding that it was worth far more than all the treasures of Egypt because he set his eyes on the future reward.

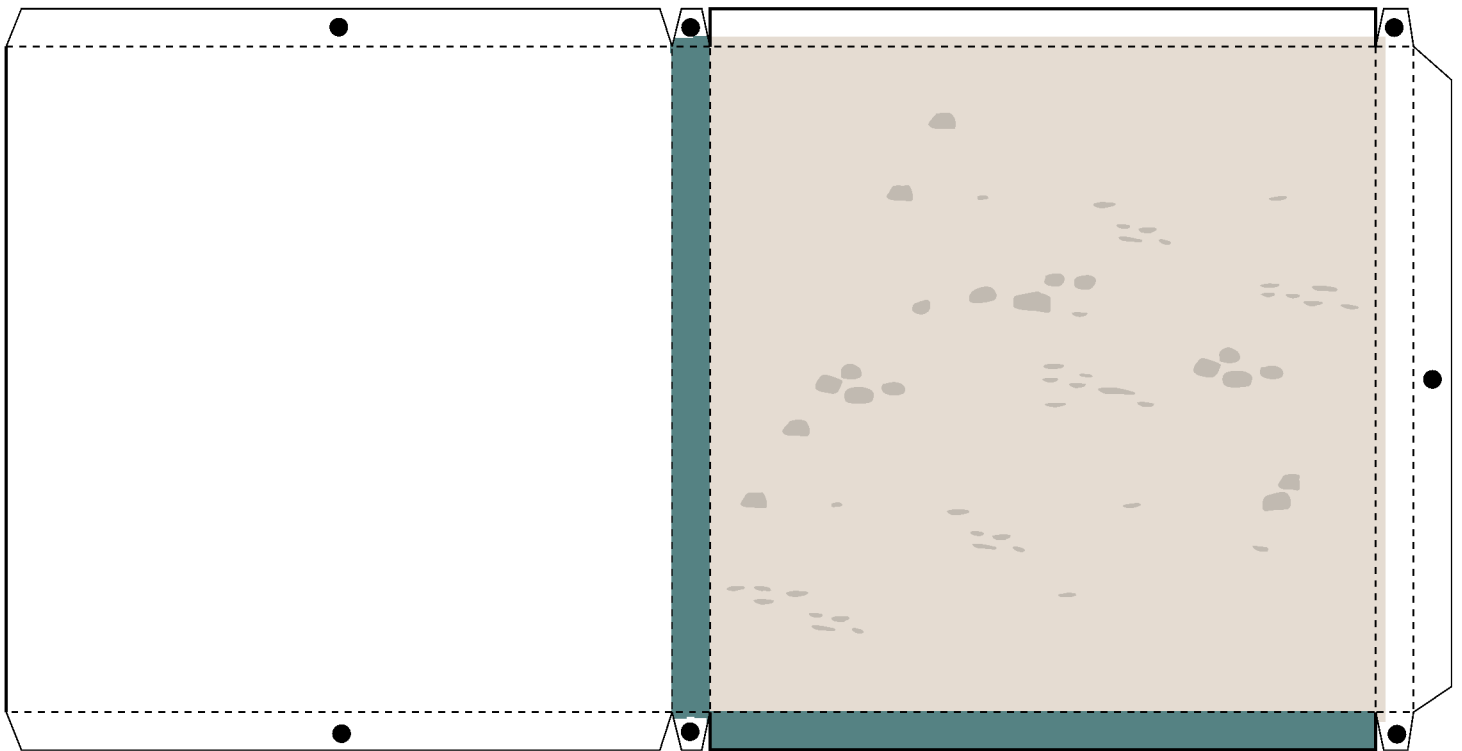
Later it was faith that made Moses leave Egypt while not fearing pharaoh's anger; it was as though he saw the invisible God and he refused to turn back.

It was by faith that he led his people to cross the Red Sea as if on dry land; and, by this act of faith, they escaped the wrath of the Egyptian and he saved the Hebrew people from bondage.

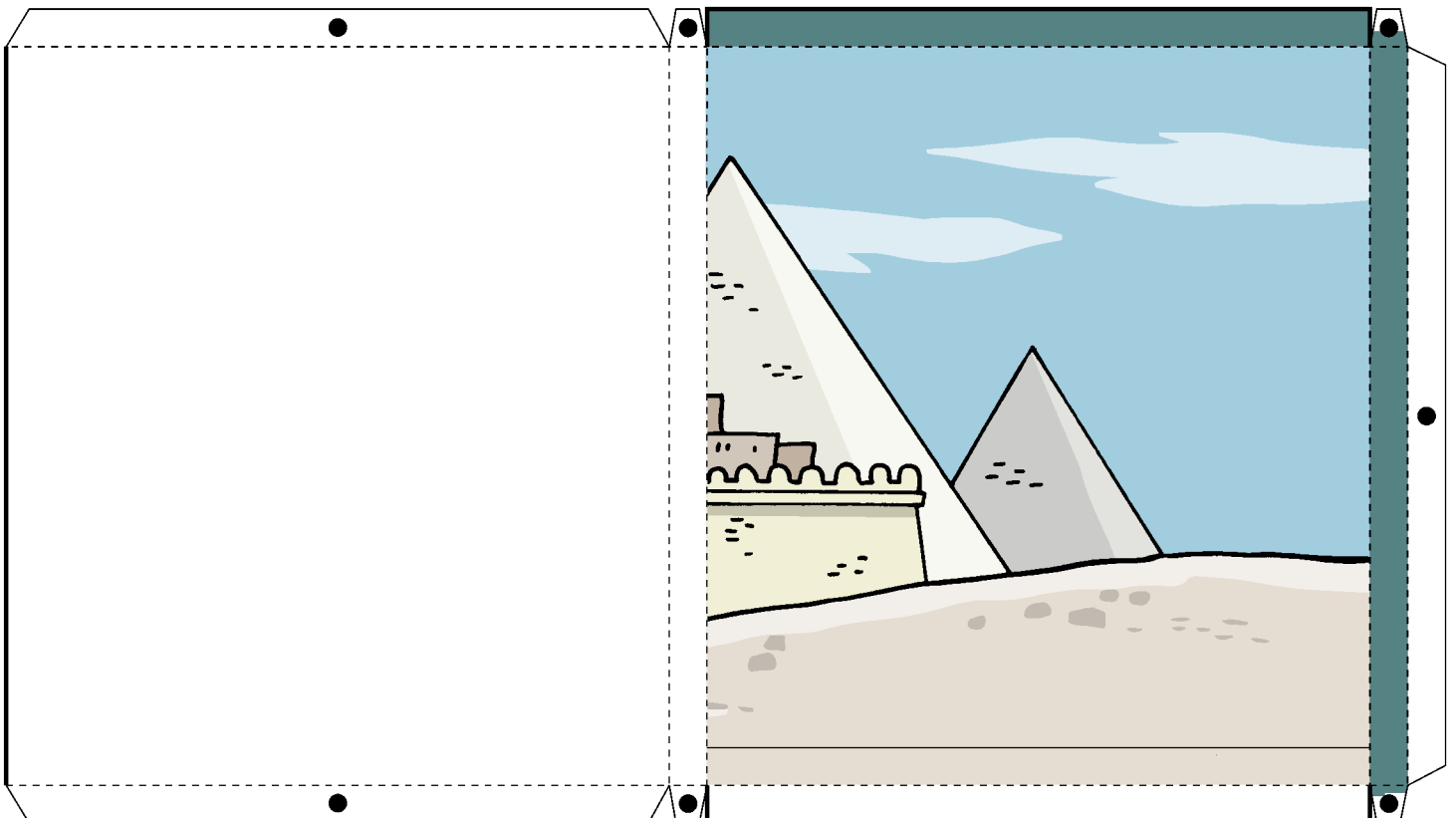
Paraphrased from Hebrew 11:23-29. The story of Moses begins in the book of Exodus.



Floor tile



background piece B



background piece A

